

平成19年度決算成果報告書

～ / 財政分析篇 ～



[] _____ 1

[] _____ 2

1	2
2	3
3	7
4	10
5	12
6	14
7	15

[] _____ 16

_____ 16

_____ 17

_____ 18

[] _____ 21

1	21
2	21
3	22
4	23
5	24
6	25
7	26
8	27

[] _____ 29

1	29
2	29
3	30
4	31
5	31

[]

32

1	32
2	32
3	33
4	33
5	33
6	33

[]

34

1	34
2	34
3	35
4	39
5	40
6	41
7	42

[]

43

1	43
2	44
3	44
4	45
5	46
6	47

[]

48

1	48
2	48
3	49
4	49

[]

_____	50
_____	51
_____	52
_____	54
_____	56
_____	58
_____	60

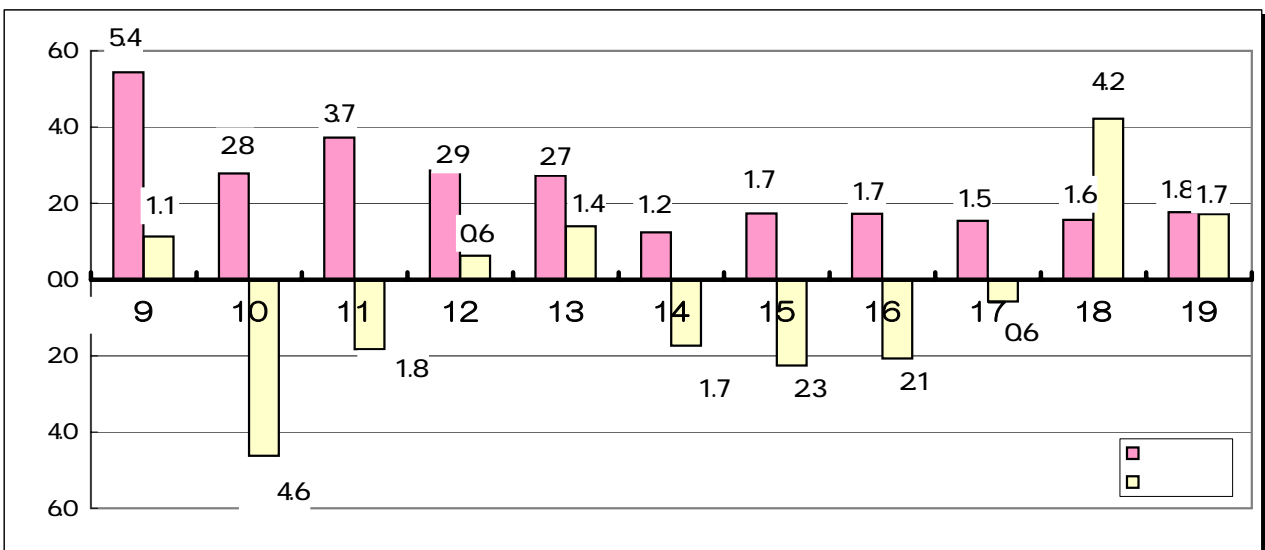
1	61
2	62
3	63
4	64

[]

5 1,994 9 6 7,645 5 7,186

			-(-				
	42,630,462	42,344,901	285,561	109,106	176,427	156,401	20,026
					176,455	156,506	19,949
	15,685,859	15,632,917	52,942	0	52,942	102,367	49,425
	12,451,036	12,588,560	137,524	0	137,524	24,036	161,560
	23,744	23,744	0	0	0	0	0
	6,495,907	6,433,719	62,188	245	61,943	0	61,943
	7,900,006	7,705,501	194,505	0	194,505	295,502	100,997
	1,901,228	1,901,228	0	0	0	0	0
	44,457,779	44,285,669	172,111	245	171,865	421,905	250,039
					348,292	578,306	230,014
	87,088,241	86,630,570	457,671	109,351	348,320	578,411	230,091

(



[2]

426 3,046 2 423 4,490 1

Q8 21 1.3

Q1

2 8,556 1

5 5,955 1

1,994 9 1 7,645 5

1 7,642 7 2 8

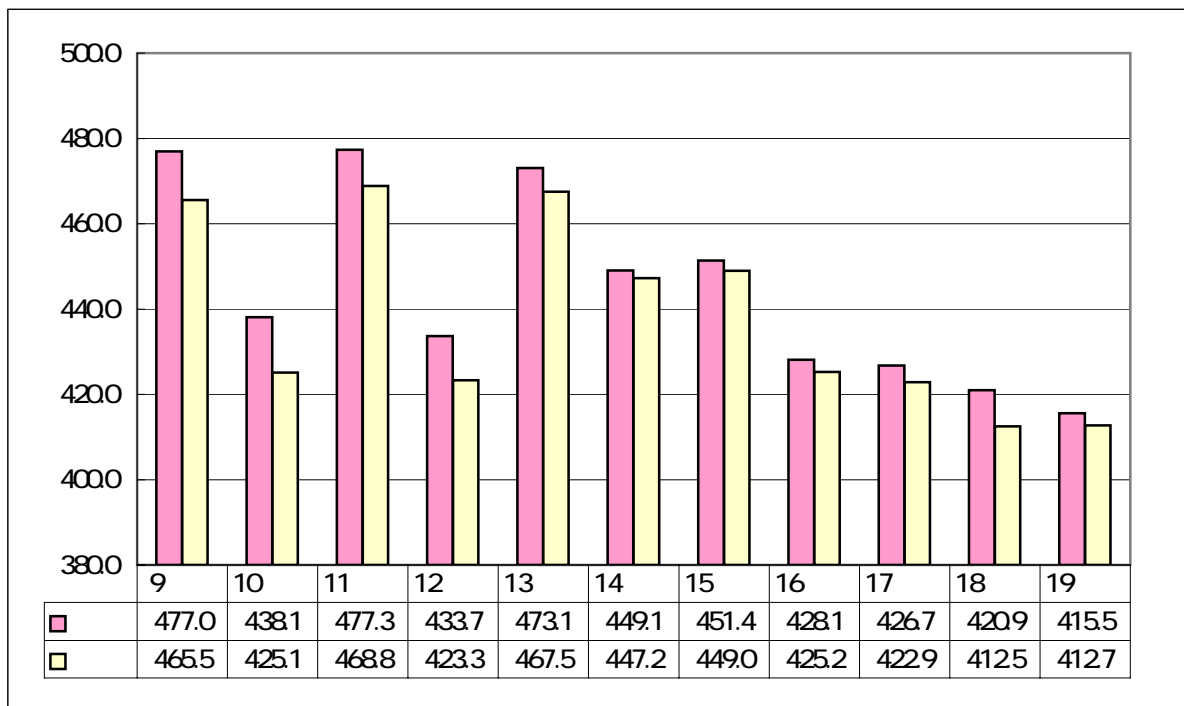
2,002 6 128

1 5,650 6 8

1 5,792 5

						(F)	
			-()		-()		-()
19	42,630,462	42,344,901	285,561	109,106	176,455	28	176,427
18	42,308,147	41,463,035	845,112	688,606	156,506	105	156,401
	322,315	881,866	559,551	579,500	19,949	77	20,026
(%)	0.8	2.1	66.2	84.2	12.7	73.3	12.8

19	41,554,362	41,268,801
18	42,094,147	41,249,035
	539,785	19,766
(%)	1.3	0.1



14 4,855 3
2 2,497 1

4 5,840 8

3 7,412 9

39

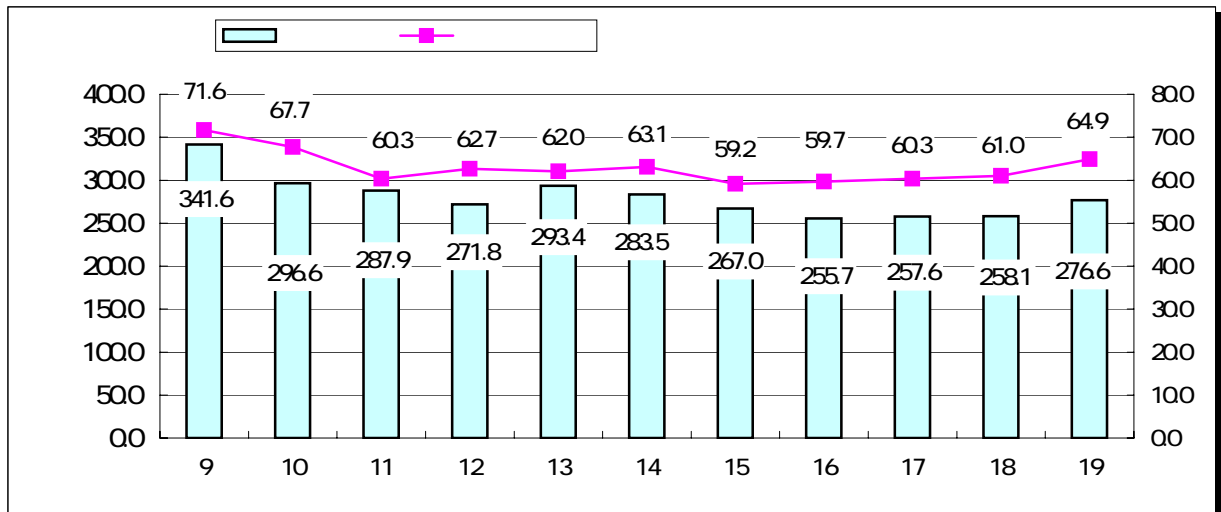
64.9

31

51.6
16

4

	H1		H1			
	21,983,817	51.6	20,535,264	48.5	1,448,553	7.1
	342,406	0.8	334,620	0.8	7,786	2.3
	1,312,788	3.1	1,300,184	3.1	12,604	1.0
	47,173	0.1	421,302	1.0	374,129	88.8
	1,639	0.0	2,497	0.0	858	34.4
	800,000	1.9	575,029	1.4	224,971	39.1
	845,112	2.0	386,704	0.9	458,408	118.5
	2,324,888	5.5	2,252,042	5.3	72,846	3.2
	27,657,823	64.9	25,807,642	61.0	1,850,181	7.2
	795,104	1.9	1,701,649	4.0	906,545	53.3
	144,488	0.3	113,313	0.3	31,175	27.5
	173,891	0.4	155,070	0.4	18,821	12.1
	116,301	0.3	141,059	0.3	24,758	17.6
	1,146,619	2.7	1,148,668	2.7	2,049	0.2
	196,666	0.5	192,834	0.5	3,832	2.0
	236,306	0.6	337,866	0.8	101,560	30.1
	24,636	0.1	24,523	0.1	113	0.5
	144,600	0.3	644,636	1.5	500,036	77.6
	3,846,606	9.0	4,212,856	10.0	366,250	8.7
	32,716	0.1	32,732	0.1	16	0.0
	3,388,464	7.8	3,156,380	7.4	232,084	7.4
	1,940,643	4.6	1,921,659	4.5	18,984	1.0
	2,785,600	6.5	2,717,260	6.4	68,340	2.5
	14,972,640	35.1	16,500,505	39.0	1,527,865	9.3
	42,630,462	100	42,308,147	100	322,316	0.8
	41,554,362		42,094,147		539,785	1.3



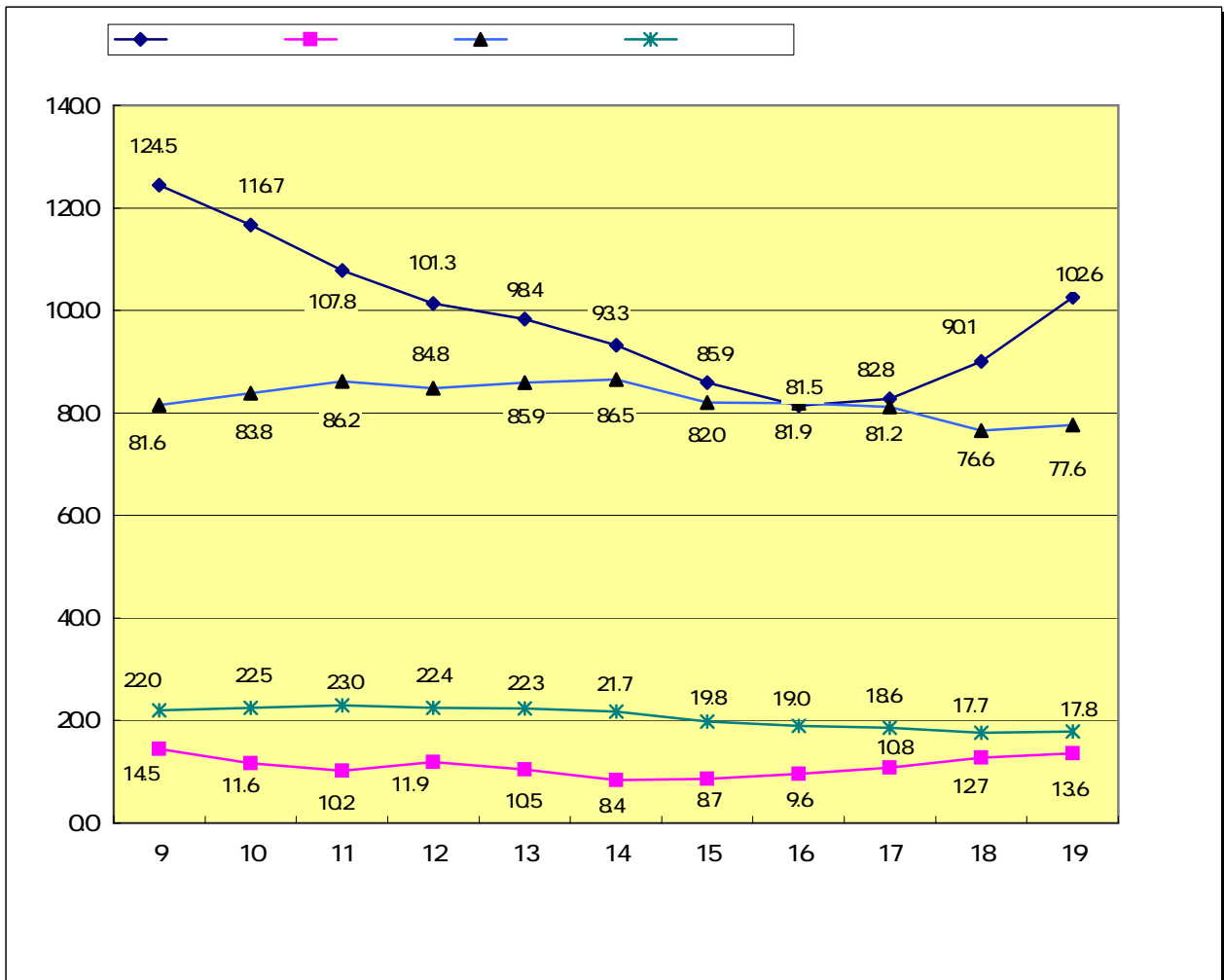
14 4,855 3 7.1

		%		%		%
	10,262,177	46.6	9,008,014	43.9	1,254,163	13.9
	1,355,614	6.2	1,274,217	6.2	81,397	6.4
	7,759,805	35.3	7,661,060	37.3	98,745	1.3
	117,604	0.6	114,247	0.6	3,357	2.9
	703,423	3.2	710,630	3.5	7,207	1.0
	0	0.0	0	0.0	0	0.0
	492	0.0	364	0.0	128	35.2
	1,784,702	8.1	1,766,732	8.6	17,970	1.0
	21,983,817	100.0	20,535,264	100.0	1,448,553	7.1
		-	227,000	-		
	78,939	-	600,175	-	521,236	86.8

()

18

19



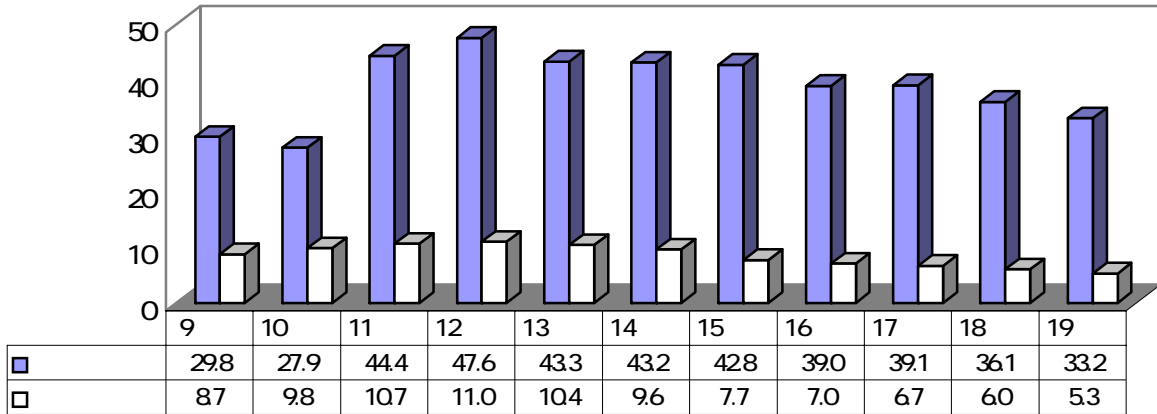
80 2 9,043 3

126 7,581 7

13

89 4 9,945

		%		%		%
	3,318,313	86.3	3,608,746	85.7	290,433	80
	528,293	13.7	604,110	14.3	75,817	12.6
	3,846,606	100.0	4,212,856	100.0	366,250	87
	1,268,900		1,402,100		133,200	9.5
	5,115,506		5,614,956		499,450	8.9



(

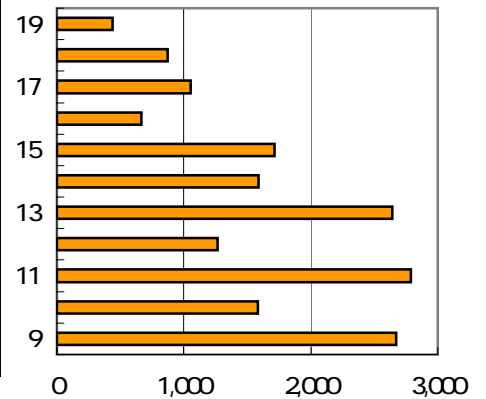
17 950

7 9,376

31.7

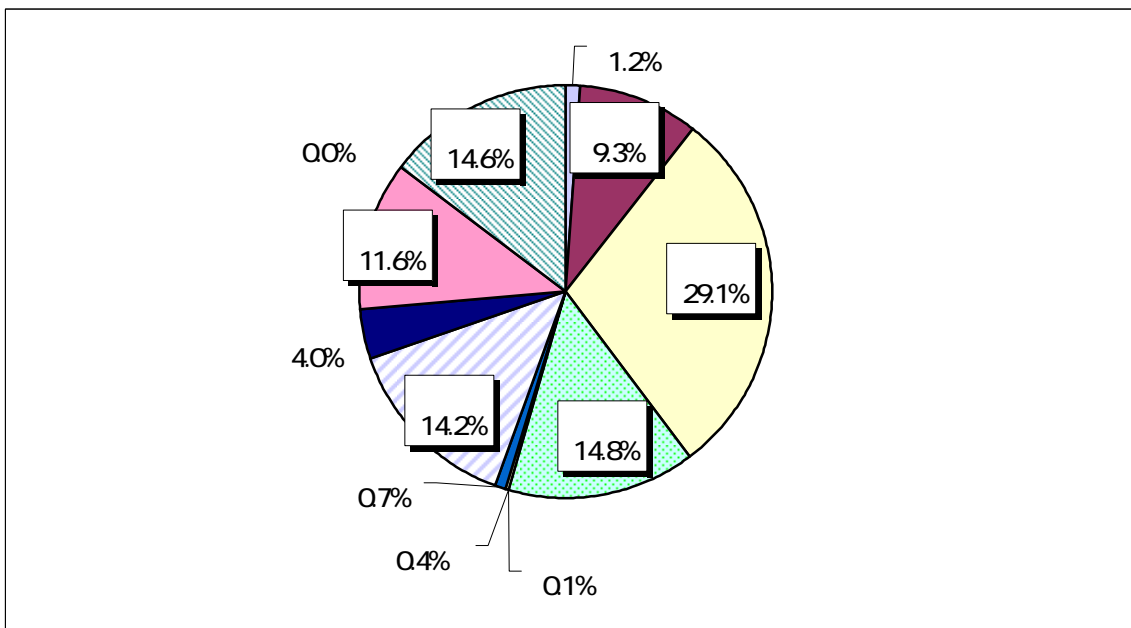
1 3,320

		(%)		(%)		(%)
	1,709,500	4.1	2,503,260	5.9	793,760	31.7
	0	0.0	227,000	0.5	227,000	100.0
	1,268,900	3.1	1,402,100	3.3	133,200	9.5
	440,600	1.1	874,160	2.1	433,560	49.6



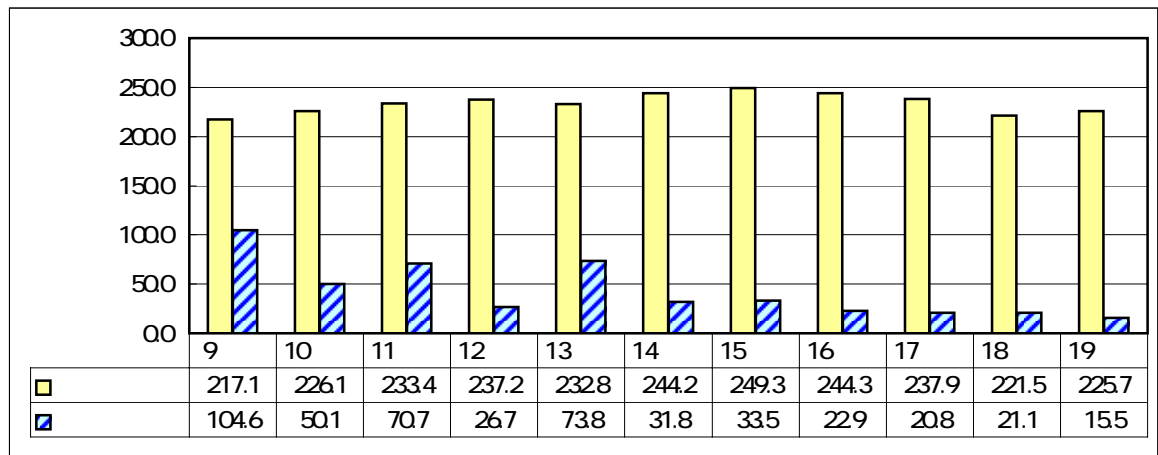
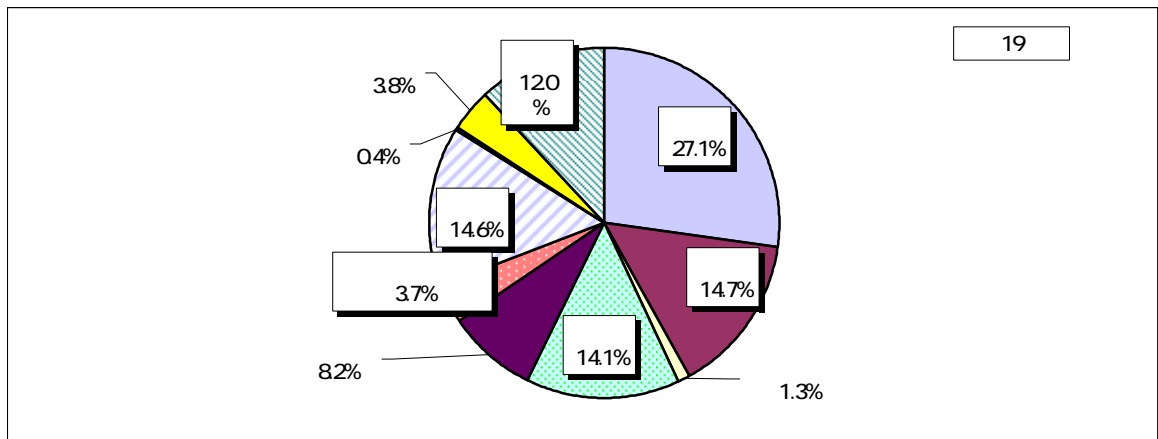
14.5% 21 423 4,490 1 7 8,428 3 8
 6 2 0.1 10 7,610
 1 1 5 5 961 4
 2 2
 3,375 5 18 4
 2 7,321 7

	H19		H18			
1	493,062	1.2	463,998	1.1	29,064	6.3
2	3,951,238	9.3	4,510,852	10.9	559,614	12.4
3	12,328,048	29.1	11,664,526	28.1	663,522	5.7
4	6,268,700	14.8	6,115,179	14.7	153,521	2.5
5	49,124	0.1	61,741	0.1	12,617	20.4
6	114,167	0.4	146,977	0.5	32,810	22.3
7	296,527	0.7	304,474	0.7	7,947	2.6
8	6,022,608	14.2	6,456,363	15.6	433,755	6.7
9	1,692,757	4.0	1,671,990	4.0	20,767	1.2
10	4,924,811	11.6	4,651,594	11.2	273,217	5.9
11	4,234	0.0	0	0.0	4,234	
12	6,199,624	14.6	5,415,341	13.1	784,283	14.5
	42,344,901	100.0	41,463,035	100.0	881,866	2.1



1 5,209 1
5 5,850 9

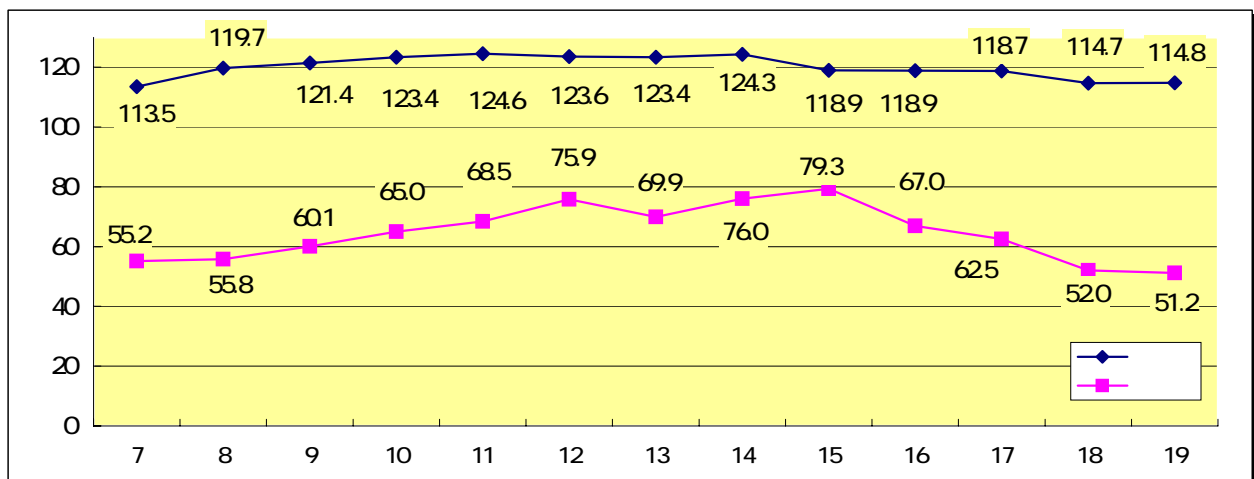
	H19		H18			
1	11,483,503	27.1	11,466,123	27.6	17,380	0.2
2	6,224,023	14.7	5,968,546	14.4	255,477	4.3
3	571,527	1.3	599,177	1.4	27,650	4.6
4	5,963,317	14.1	5,483,277	13.2	480,040	8.8
5	3,476,270	8.2	3,570,906	8.6	94,636	2.7
6	1,547,922	3.7	2,106,431	5.1	558,509	26.5
7	4,234	0.0	0	0.0	4,234	
8	6,199,191	14.6	5,414,137	13.1	785,054	14.5
9	158,166	0.4	422,948	1.0	264,782	62.6
10	23,252	0.1	0	0.0	23,252	-
11	1,613,745	3.8	1,638,499	4.0	24,754	1.5
12	5,079,750	12.0	4,792,991	11.6	286,759	6.0
	42,344,901	100.0	41,463,035	100.0	881,866	2.1

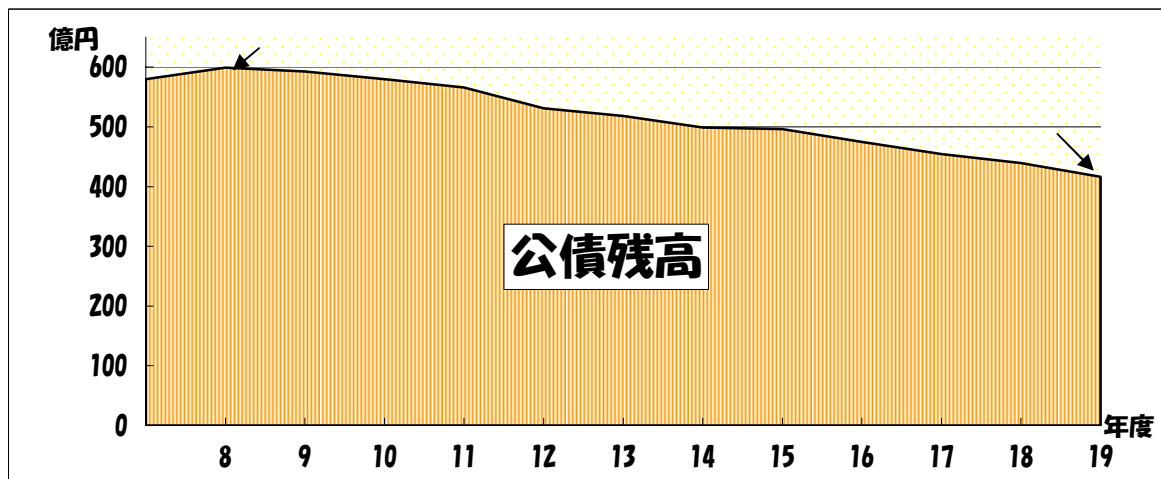


H19 10 7,610

(H16 39 8,030 H17 6,740 H18 2 1,400

	454,130	21,049			17,883							493,062
	2,475,288	1,064,845	21,062		220,321	10,957		157,925		840		3,951,238
	1,743,436	516,061	7,348	5,873,183	563,269	103,673		241		6,000	3,514,837	12,328,048
	1,607,781	2,211,716	178,375	495	1,603,587	43,064			23,252	600,430		6,268,700
	8,726	5,408			6,780					28,210		49,124
	67,380	11,562	111		6,357	6,962					21,795	114,167
	86,067	8,233			58,247					143,980		296,527
	1,334,417	765,357	199,985		625,359	745,312				809,060	1,543,118	6,022,608
	1,352,485	159,840	8,392		30,325	141,715						1,692,757
	2,353,793	1,459,519	156,254	89,639	344,142	496,239				25,225		4,924,811
						4,234						4,234
		433					6,199,191					6,199,624
	11,483,503	6,224,023	571,527	5,963,317	3,476,270	1,552,156	6,199,191	158,166	23,252	1,613,745	5,079,750	42,344,901



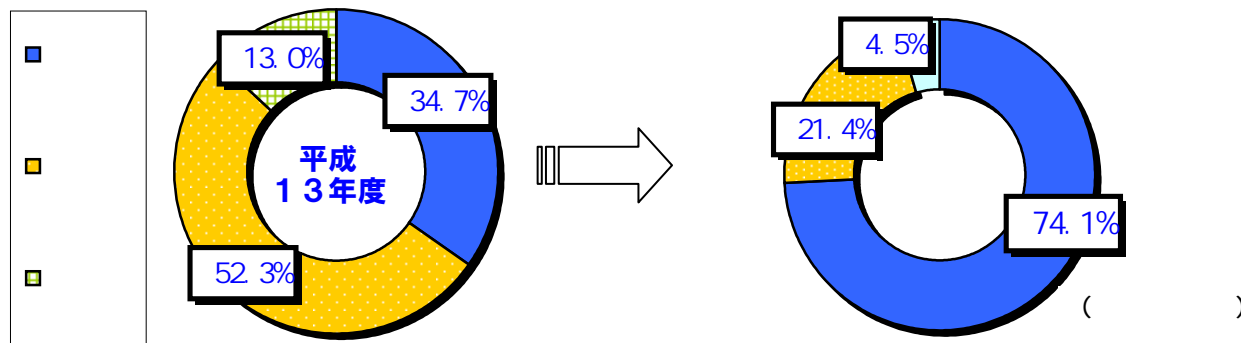


4.5

74.1

%

21.4



	A		B		C		A B C
	13,555,556	44.0	3,874,807	43.5	541,541	29.1	17,971,904
	4,261,537	13.8	2,417,771	27.1	1,320,893	70.9	8,000,201
	660,673	2.1	2,619,179	29.4	0	0.0	3,279,852
	7,322,912	23.8	0	0.0	0	0.0	7,322,912
	192,134	0.6	0	0.0	0	0.0	192,134
	132,220	0.4	0	0.0	0	0.0	132,220
	152,091	0.5	0	0.0	0	0.0	152,091
	215,700	0.7	0	0.0	0	0.0	215,700
	266,426	0.9	0	0.0	0	0.0	266,426
	1,796,000	5.8	0	0.0	0	0.0	1,796,000
	2,287,074	7.4	0	0.0	0	0.0	2,287,074
	30,842,323	74.1	8,911,757	21.4	1,862,434	4.5	41,616,514

	19	20	21	22	23	24	25	26	20
	22,470	22,481	22,492	22,505	22,517	22,531	22,545	329,049	464,120
	1,193	1,068	942	817	690	565	440	562	5,084
	2,413	2,228	2,042	1,856	1,670	1,485	1,299	3,892	14,472
	1,392,638	20							6,971,569
		20							50,992
		84,569							84,569
		35,595							35,595
		1,995							1,995
		1,222							1,222
		3,893							3,893
		3,342							3,342
		2,310							2,310
		1,701							1,701
		1,714							1,714
		1,040							1,040
		2,205							2,205
		18,934							18,934
		500							500
		4,741							4,741
		2,930							2,930
		2,447							2,447
		24,263							24,263
		777							777
		2,851							2,851
		3,150							3,150
		890							890
		998							998
		15,597							15,597
	1,418,714	134,609	25,476	25,178	24,877	24,581	24,284	333,503	7,615,069

	4,262,900	
	2,577,000	
	12,662	
	200,000	
	13,800,000	
	251,886	
	49,101	
	21,153,549	

	9,500,000	
	9,500,000	
	9,700,000	
	9,700,000	
	9,900,000	
	4,600,000	
	52,900,000	

			4,455	4,455	8	1,392			3,055
			10,036	10,036					10,036
			212,640	212,640			212,640		
			10,264	10,263			9,900		363
			289,000	289,000		107,086	181,900		14
			60,397	60,397		24,579	33,300		2,518

			38,470	38,470					38,470
			7,075	7,075					7,075
			8,608	5,972					5,972
			18,790	13,852					13,852
			10,664	3,399					3,399
			35,306	24,344					24,344

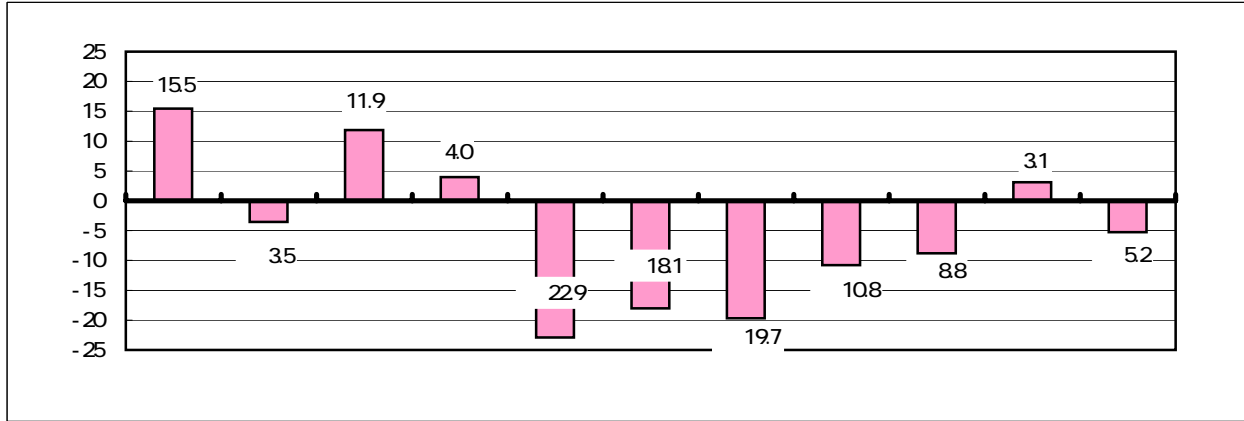
項 目		
	H19効果額	H15～19累計額
行政コストの圧縮		
	1,013,068	3,568,141
既実施分 H18までの取組み:職員定数の削減、特殊勤務手当の見直しなど	633,233	
	18,101	
	159,300	
	202,434	
既実施分 H18までの取組み:害虫駆除薬剤散布業務の委託	(4,199)	
	(6,730)	
	(7,144)	
	761,261	2,162,059
既実施分 H18までの取組み:公用車の減車、福祉金の見直しなど	736,262	
	10,565	
	14,434	
	161,637	615,459
既実施分 H18までの取組み:団体運営補助金、私立幼稚園就園奨励金の見直しなど	161,059	
	578	
	20,600	103,000
既実施分 H18までの取組み:外郭団体人件費の見直し	20,600	
	79,827	856,588
H18までの取組み:旧労働福祉会館敷地の売却	79,827	
	419,562	1,762,312
既実施分 H18までの取組み:社会体育施設、芸術・文化施設の使用料見直しなど	419,562	
	1,990	3,925
既実施分 H18までの取組み:職員給与袋の広告掲載	250	
	1,740	
	2,457,945	9,071,484
	486,979

- ① 入札差金(契約事務の見直しによるものも含む)については、効果額として計上していない。
② 行財政改革効果額は、見直し前の制度を継続した場合の推計で算定している。

[]

19

2



	44,452,665	47,698,900	50,315,443	47,808,555	43,102,648	47,306,572
	43,654,632	46,553,416	48,944,015	46,961,729	42,065,854	46,751,877
	550,000	16,240	1,055,536	610,700	289,755	2,942,671
	911,421	1,002,034	371,480	1,385,414	400,065	389,613
		16,240	47,636	39,084		
	43,902,665	47,682,660	49,259,907	47,197,855	42,812,893	44,363,901
	42,743,211	45,535,142	48,524,899	45,537,231	41,665,789	46,362,264
	614,697	602,009	1,088,939	474,736	750,757	294,201
	544,757	1,545,509	353,931	1,185,888	396,347	2,292,564

	45,960,206	46,939,975	49,428,745	48,800,527	43,159,401	43,083,948
	45,776,079	46,698,068	49,141,099	48,413,774	42,314,290	42,798,388
	2,255,401	2,426,717	1,720,375	1,481,605	575,029	800,000
	326,554	286,844	470,382	305,058	731,312	98,166
				142,796		721
	43,704,805	44,513,258	47,708,370	47,318,922	42,584,372	42,283,948
	45,449,525	46,411,224	48,670,717	47,965,920	41,582,978	42,699,501
	60,373	68,283	114,803	232,461	688,712	109,134
	1,805,093	1,966,249	1,077,150	879,459	312,682	524,687

95 8

1 8

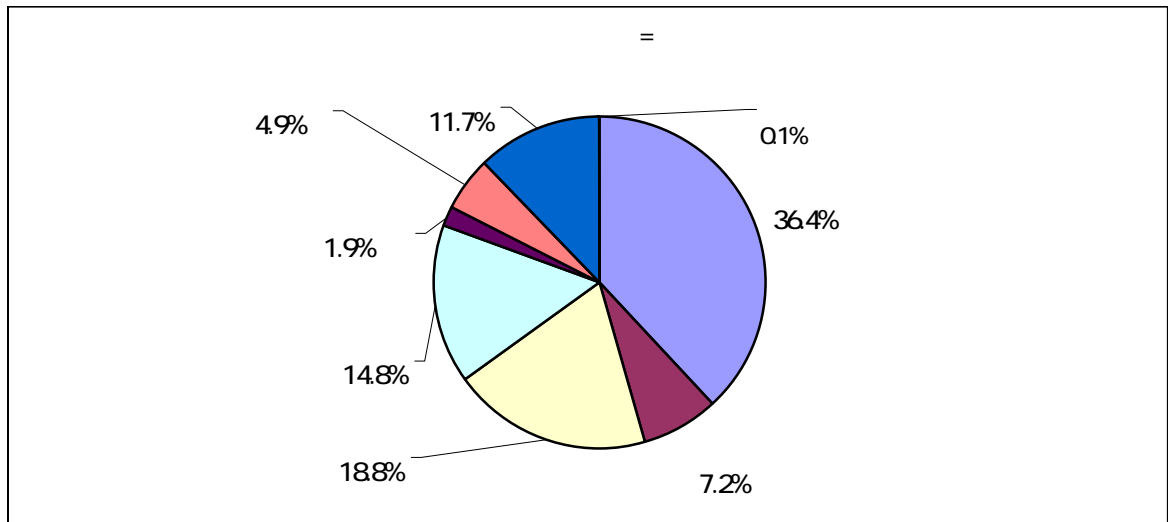
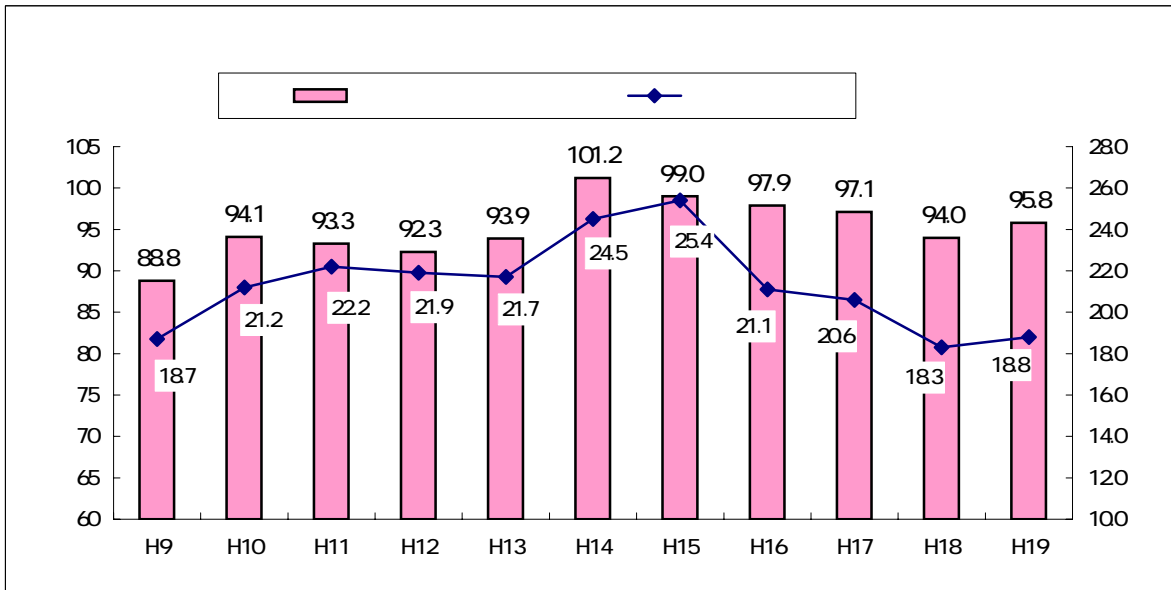
19

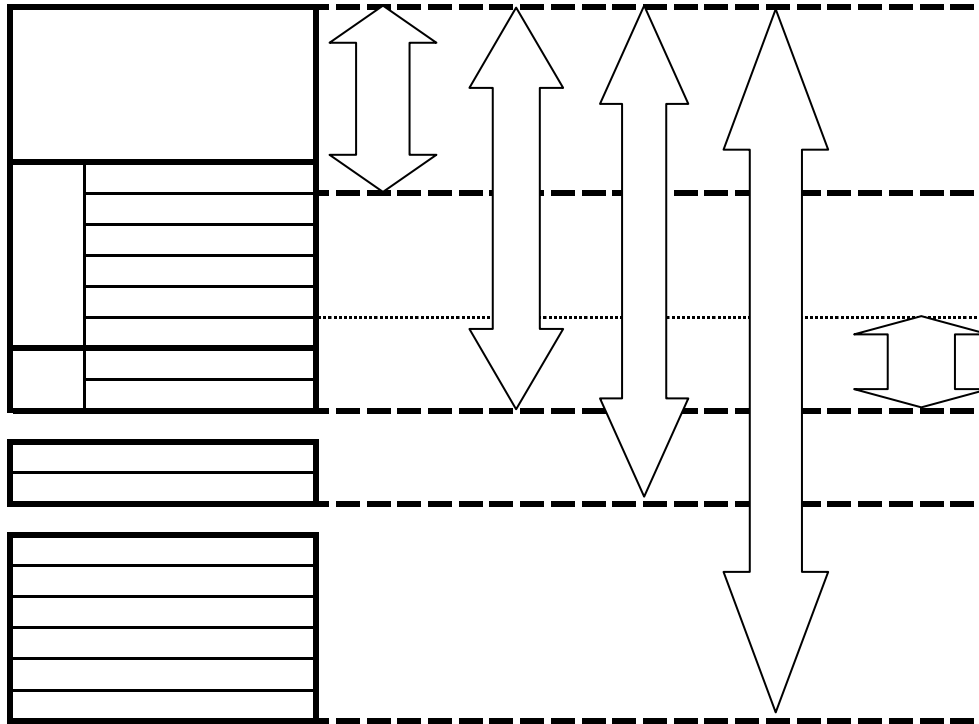
1 4,965

8,879

2

6





◎健全化判断比率

実質赤字比率	連結実質赤字比率	実質公債費比率	将来負担比率
— (11.92)	— (16.92)	10.1 (25.0)	186.7 (350.0)

備考

1. 実質赤字額又は連結実質赤字額がない場合及び実質公債費比率又は将来負担比率が算定されない場合は、「—」を記載している。
2. 本市の早期健全化基準を括弧内に記載している。

◎資金不足比率

特別会計の名称	資金不足比率(%)	経営健全化基準(%)	備考
水道事業	—	20.0	3,333,088千円
病院事業	14.9	20.0	4,047,225千円
下水道事業	—	20.0	2,319,966千円

備考

1. 資金不足額がない場合は、「—」を記載している。
2. 備考欄には、資金不足比率の算定に用いた事業の規模について記載している。

◎健全化判断比率

比率名	算定ルール
	(
	(

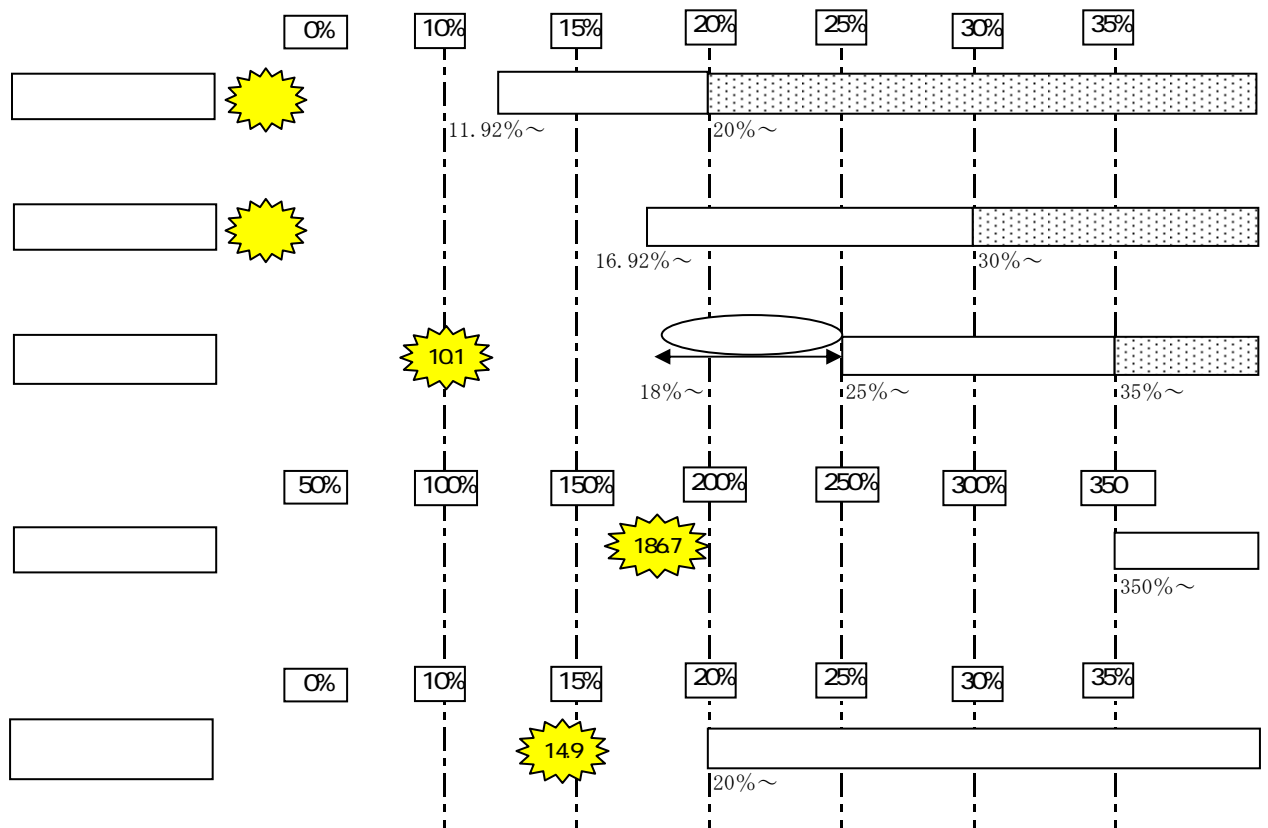
◎資金不足比率

比率名	算定ルール
	20%

◎早期健全化基準、財政再生基準、経営健全化基準



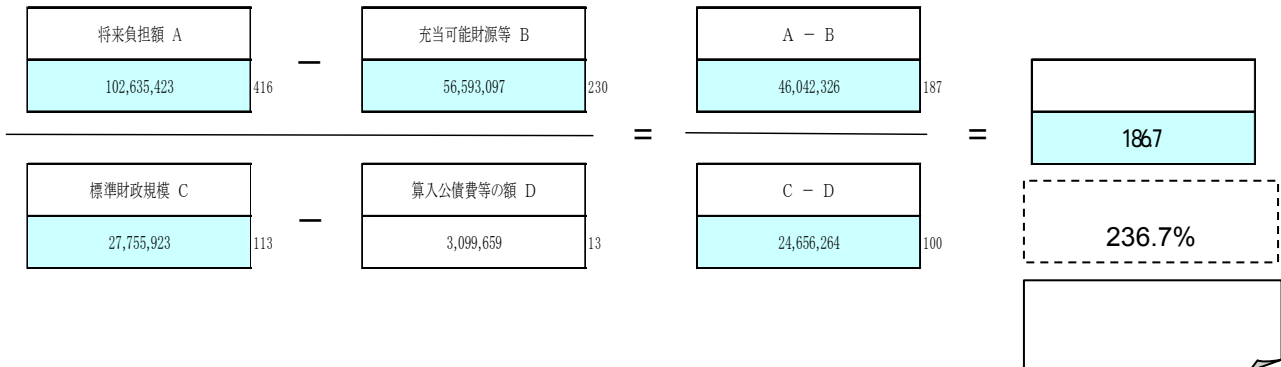
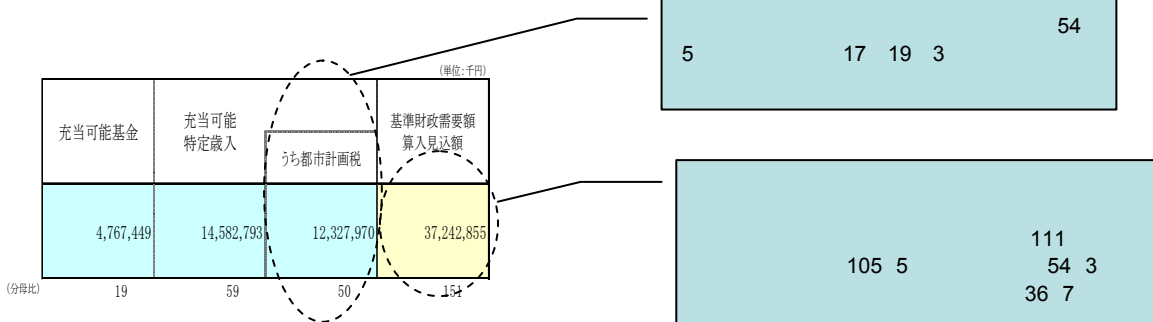
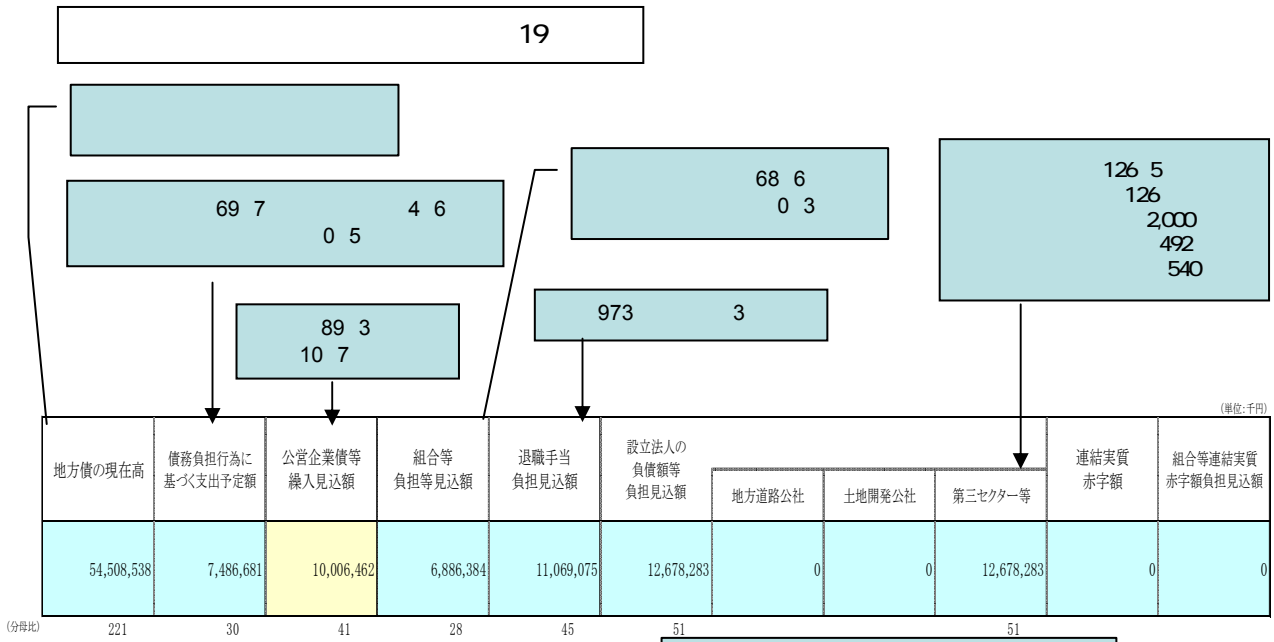
は、川西市の数値



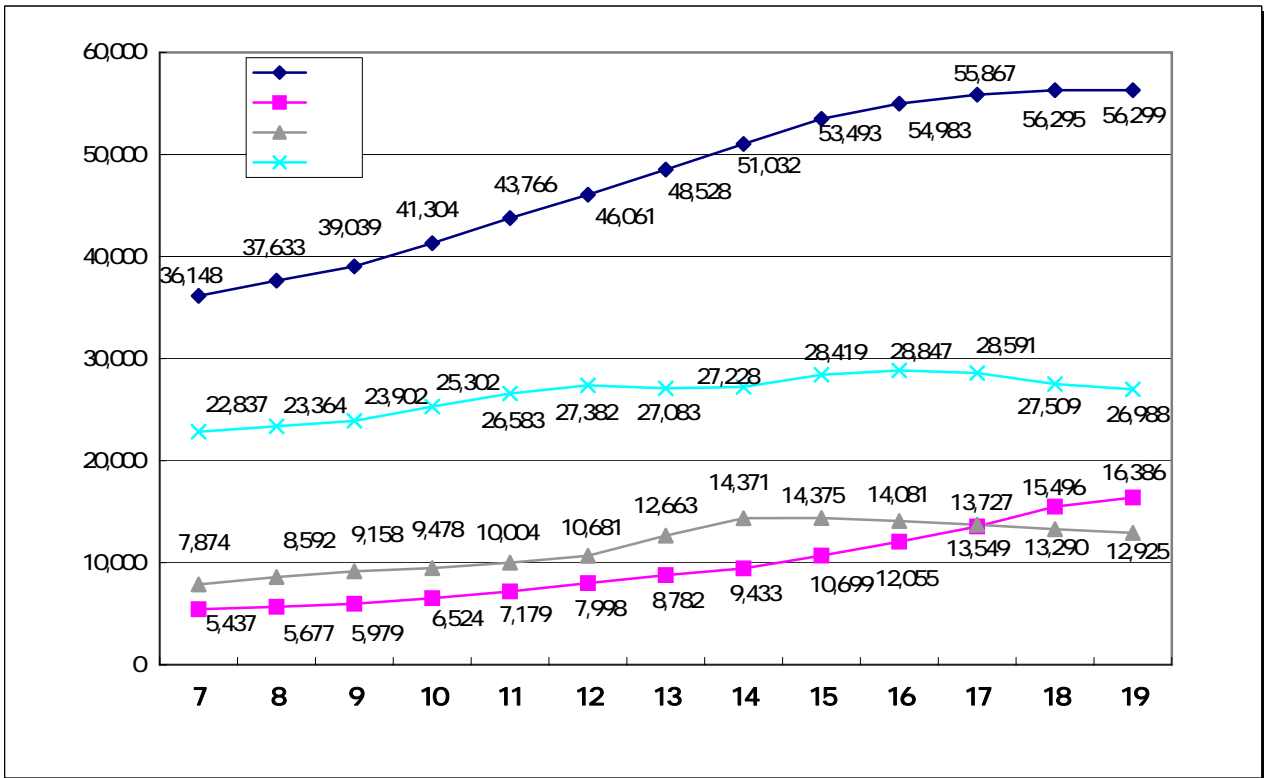
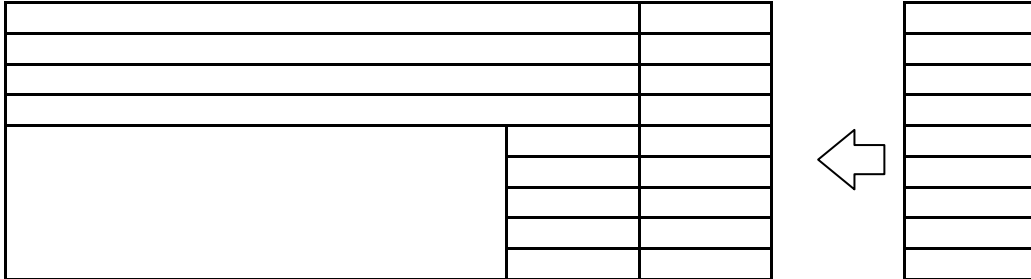
	H15	H16	H17	H18	H19
	227	17.4	168	14.4	15.4
3			190	162	155



	H15	H16	H17	H18	H19
			11.5	9.2	9.7
3					101



[]



=

=

1
47

50

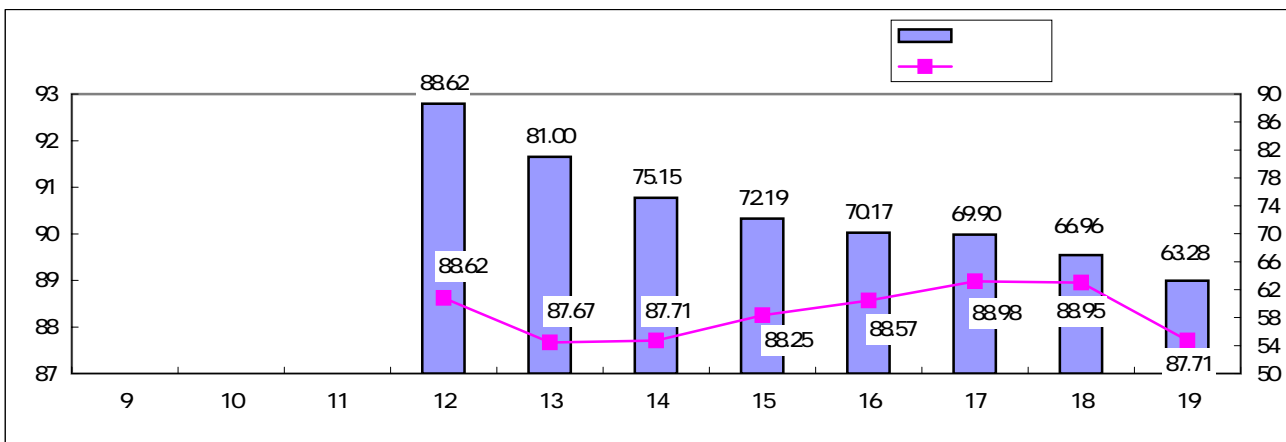
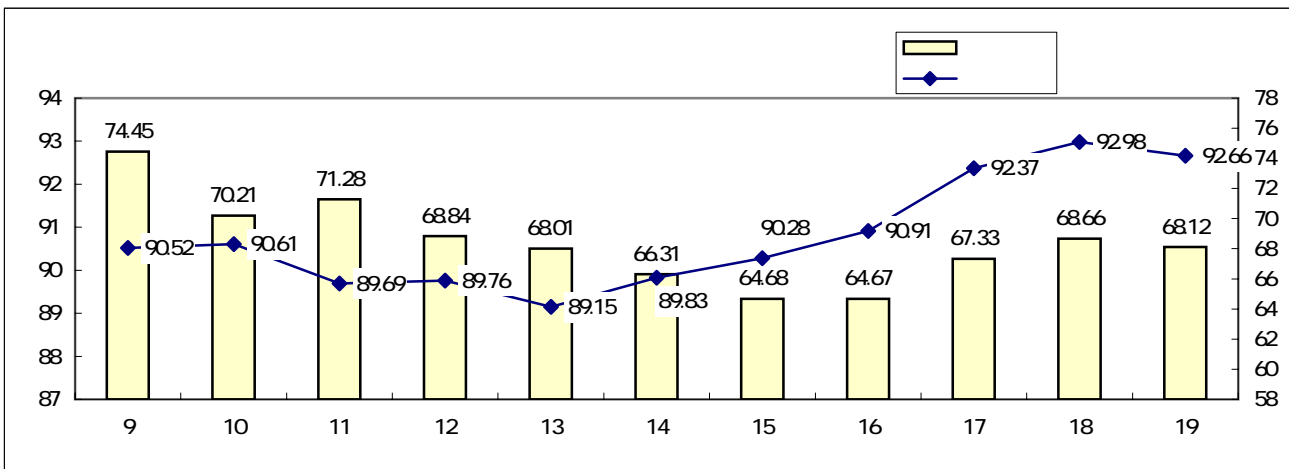
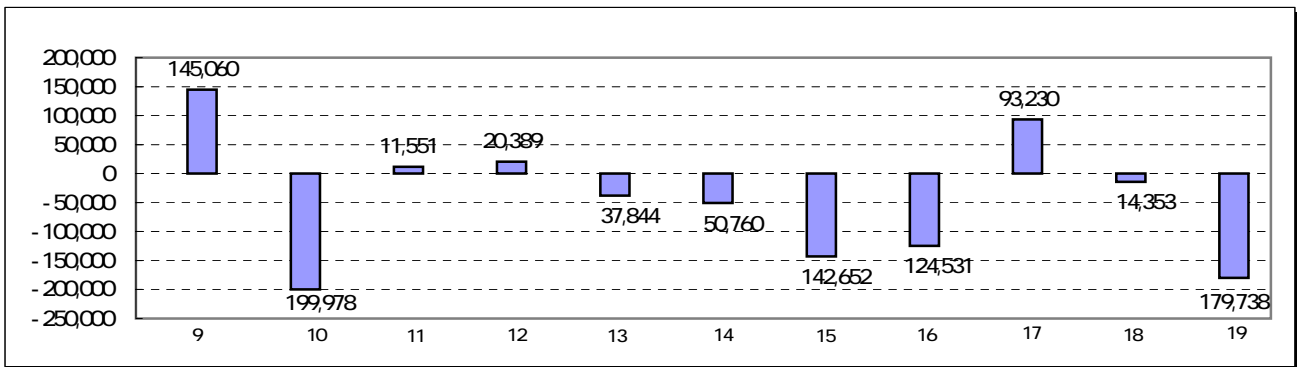
156 8,585 9

156 3,291 7

5,294 2

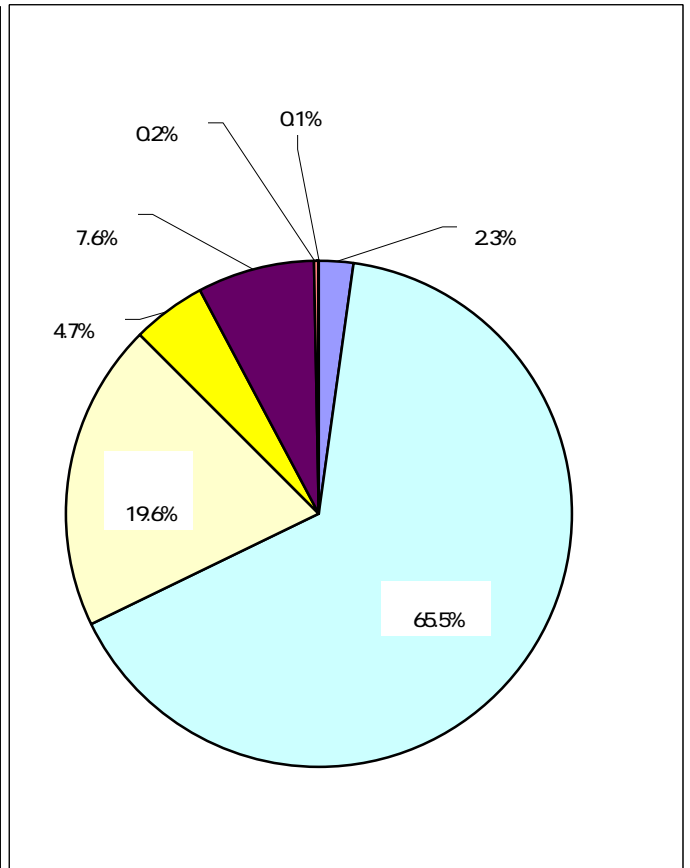
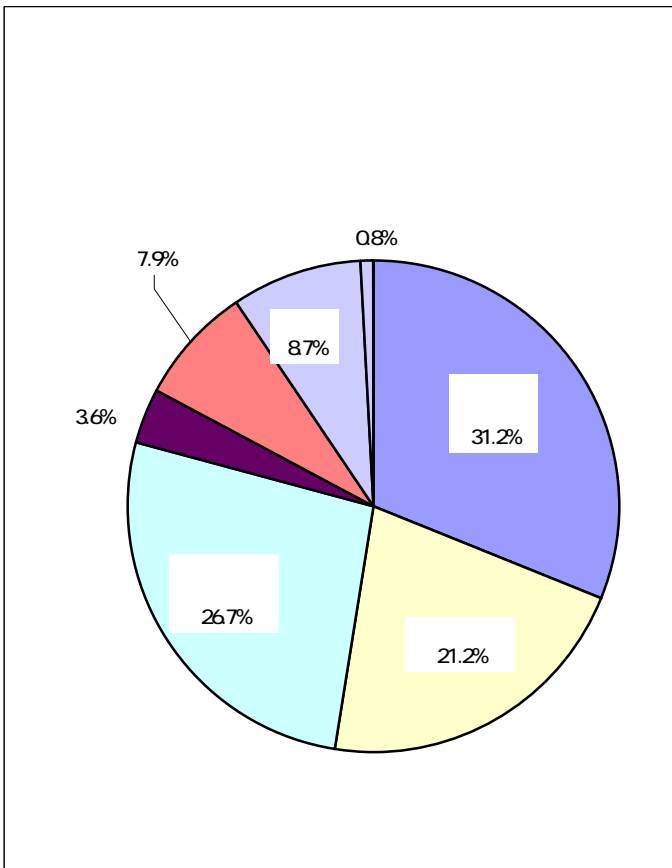
1 7,973 8

			- (
	15,685,859	15,632,917	52,942	0	232,680	179,738
	14,984,639	14,882,272	102,367	0	116,720	14,353
	701,220	750,645	49,425	0	115,960	165,385
(%)	4.7	5.0	48.3	—	99.3	1152.3



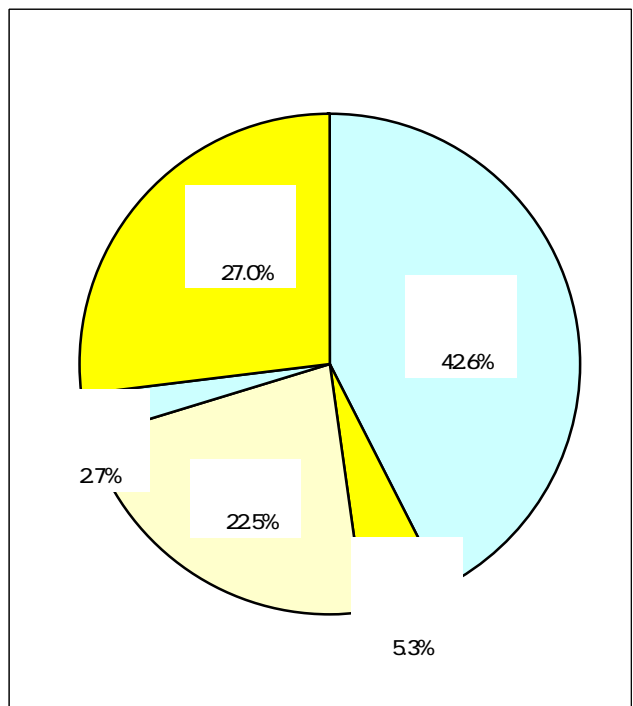
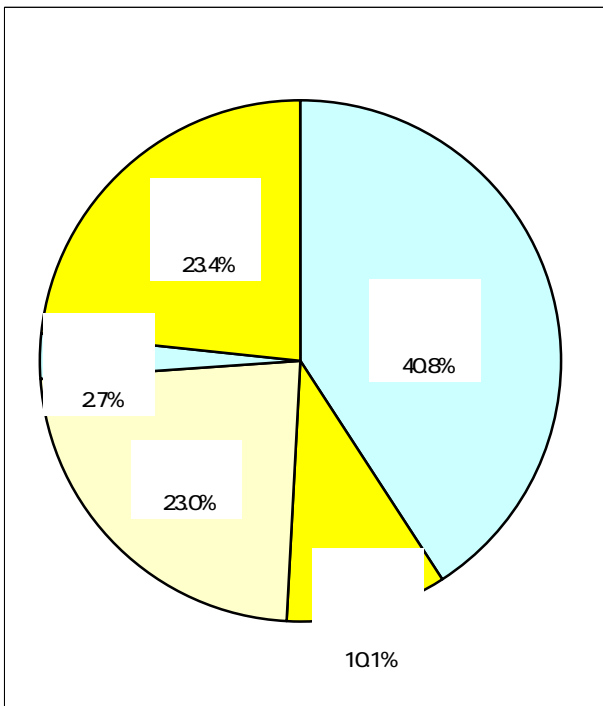
	1		1			
1	4,894,801	31.2	4,869,418	32.5	25,383	0.5
2	666	0.0	650	0.0	16	0.2
3	3,330,051	21.2	3,219,803	21.5	110,248	3.4
4	4,180,473	26.7	4,361,808	29.1	181,335	4.2
5	560,449	3.6	536,175	3.6	24,274	4.5
6	1,235,459	7.9	685,020	4.6	550,439	80.4
7	1,362,377	8.7	1,281,479	8.6	80,898	6.3
8	102,367	0.7	0	0.0	102,367	—
9	19,217	0.1	30,285	0.2	11,068	36.5
	15,685,859	100.0	14,984,639	100.0	701,221	4.7

1	353,632	2.3	312,224	2.1	41,408	13.3
2	10,247,134	65.5	9,645,783	64.8	601,351	6.2
3	3,063,083	19.6	3,105,894	20.9	42,811	1.4
4	733,369	4.7	744,857	5.0	11,488	1.5
5	1,190,797	7.6	680,951	4.6	509,846	74.9
6	36,250	0.2	33,976	0.2	2,274	6.7
7	8,653	0.1	271,700	1.8	263,047	96.8
8	0	0.0	86,888	0.6	86,888	100.0
	15,632,917	100.0	14,882,272	100.0	750,644	5.0



	1		1			
1	556,114	40.8	545,408	42.6	10,706	20
2	137,479	10.1	67,555	5.3	69,924	103.5
3	313,518	23.0	288,541	22.5	24,977	8.7
4	36,867	2.7	34,067	2.7	2,800	8.2
5	318,399	23.4	345,908	27.0	27,509	80
	1,362,377	100.0	1,281,479	100.0	80,898	6.3

15



(1)

1,636 4
18

1 236 7

3,641 9

2,422 7

	1		1			
1	2,820,874	28.4	2,903,999	30.7	83,125	2.9
2	5,652,710	57.0	5,273,749	55.8	378,961	7.2
3	1,451,310	14.6	1,276,161	13.5	175,149	13.7
	9,924,894	100.0	9,453,909	100.0	470,985	5.0

	1		1			
1	353,701	3.6	312,290	3.3	41,411	13.3
2	9,527,165	96.3	8,874,467	93.0	652,698	7.4
3	7,609	0.1	357,253	3.7	349,644	97.9
	9,888,475	100.0	9,544,010	100.0	344,465	3.6

	36,419		90,102
	12,192		78,665
()	4,172		66,102
	16,364		12,563
	24,227		11,437

(2)

2 1,631 6
H18

9,644 4

19

1 2,928 3 18

H19

20

	1		1			
1	1,812,706	35.5	1,689,890	34.8	122,816	7.3
2	3,292,257	64.5	3,160,658	65.1	131,599	4.2
3	2,095	0.0	4,676	0.1	2,581	55.2
	5,107,058	100.0	4,855,225	100.0	251,834	5.2

	1		1			
1	5,010,030	100.0	4,592,071	100.0	417,959	9.1
2	584	0.0	542	0.0	42	7.7
	5,010,614	100.0	4,592,612	100.0	418,001	9.1

	96,444		262,613
	220,979		257,081
()	4,663		127,798
	216,316		129,283
	124,535		5,531
	4,748		5,531
	129,283		0

(3)

7,992 1

7,517 3

	1		1			
1	261,220	39.9	275,528	40.8	14,308	5.2
2	361,465	55.3	368,400	54.5	6,935	1.9
3	31,222	4.8	31,578	4.7	356	1.1
	653,907	100.0	675,506	100.0	21,599	3.2

	1		1			
1	733,368	99.9	744,857	99.9	11,489	1.5
2	460	0.1	793	0.1	333	42.0
	733,828	100.0	745,650	100.0	11,822	1.6
	79,921		70,144			
	4,748		5,531			
	75,173		64,613			

(4) 19

(1) (3)

1 8,022 9

1 7,973 8

19

18

19 1

1 6,538 5

34 40

		1	
	24,227	11,437	
	129,283	0	
	75,173	64,613	
	180,229	76,049	
(+)	491	61,696	19
	179,738	14,353	165,385

20

75

65

74

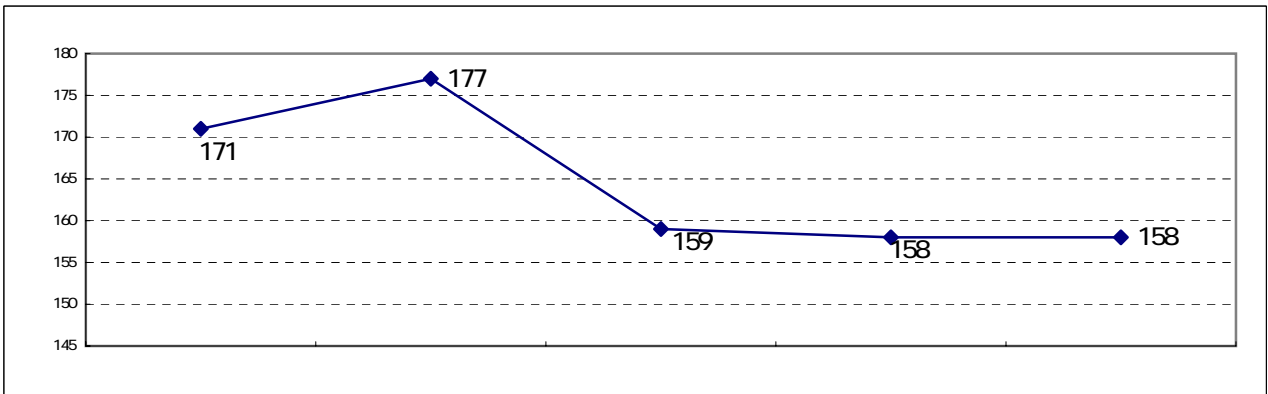
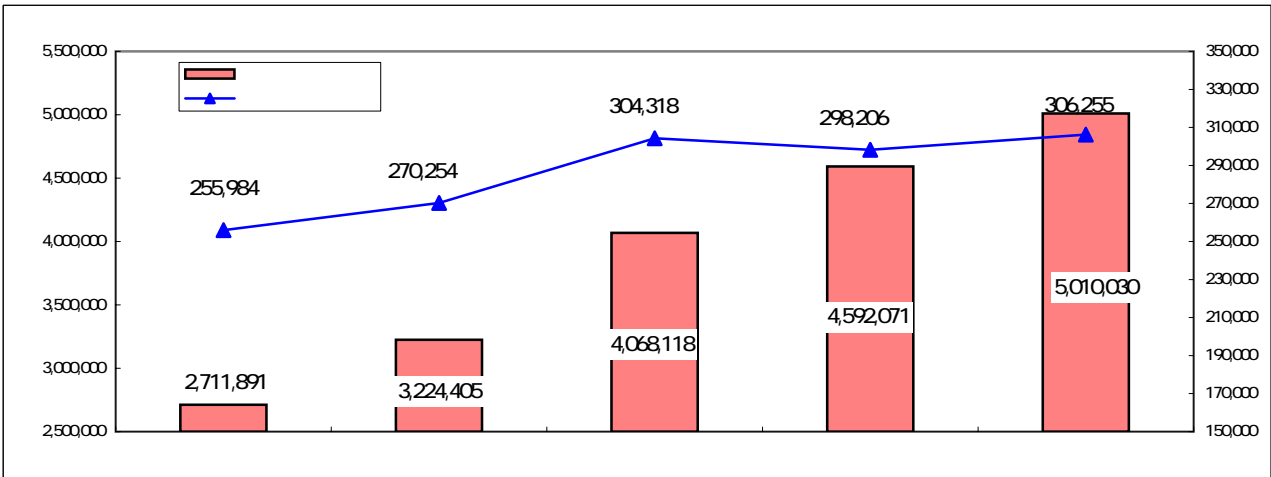
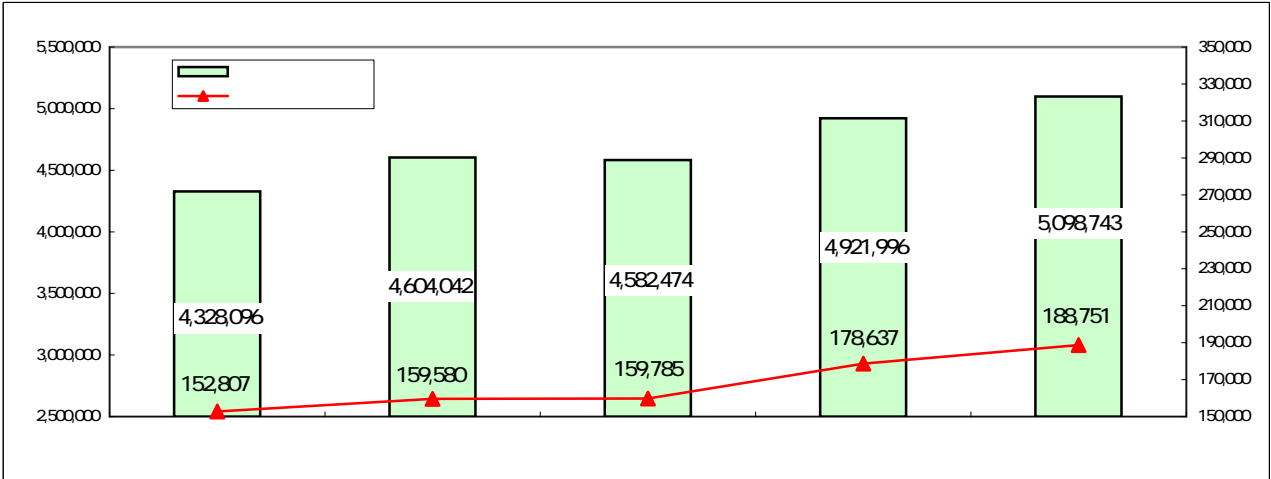
2

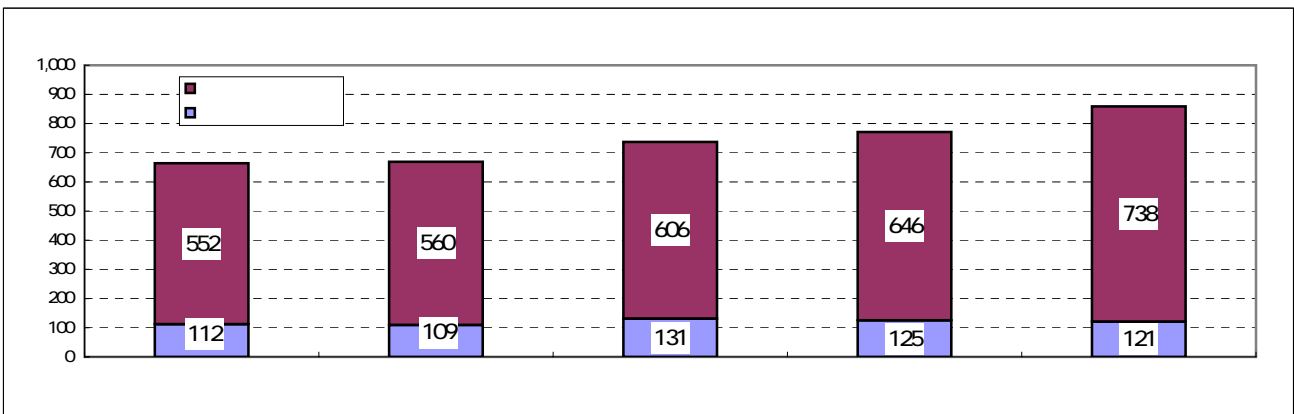
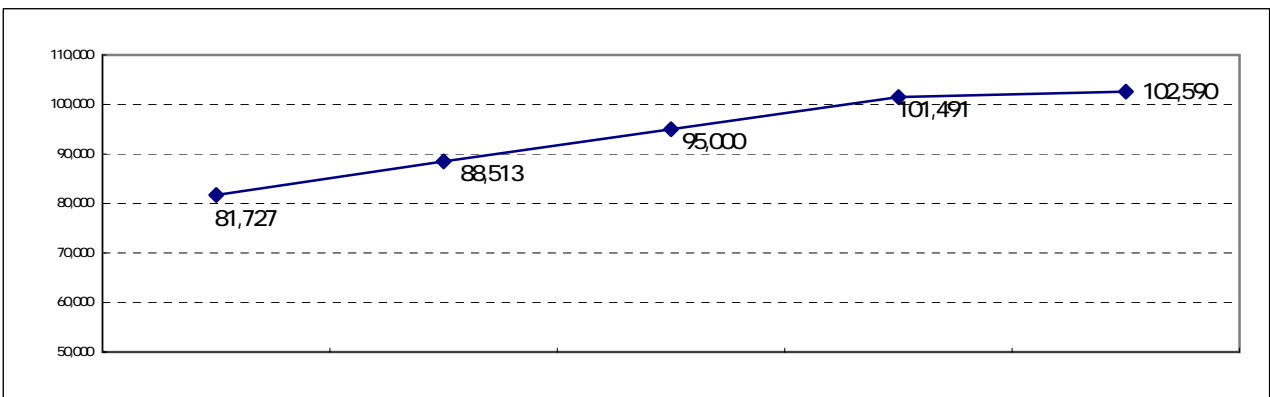
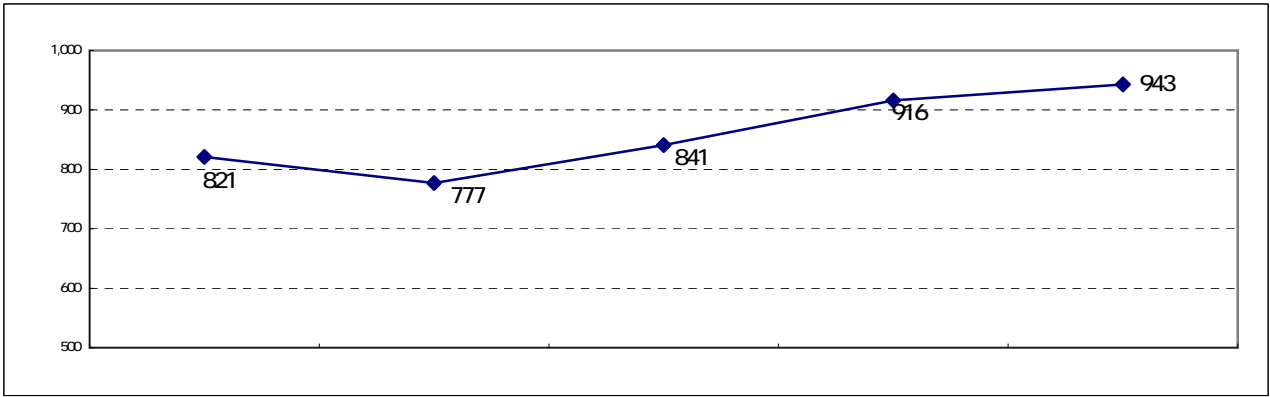
3

20

20

	5.90%	24,700	18,200	470,000
	1.70%	7,400	5,600	120,000
	2.40%	9,800	5,400	90,000

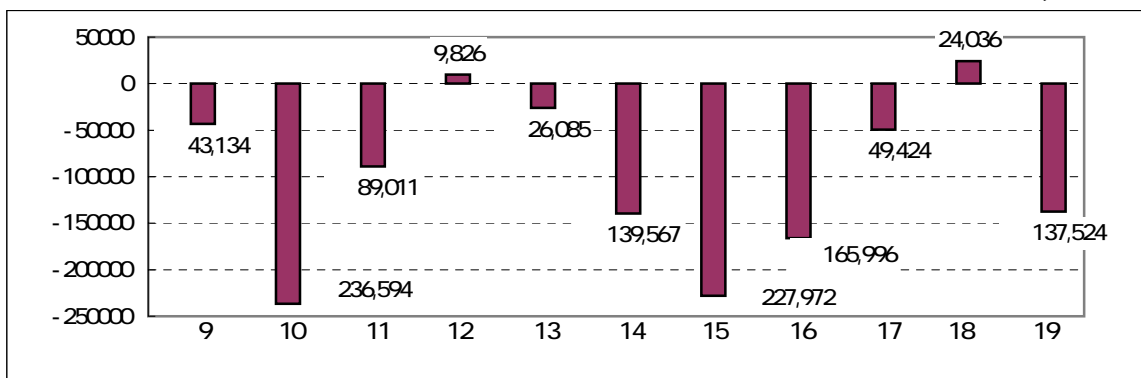
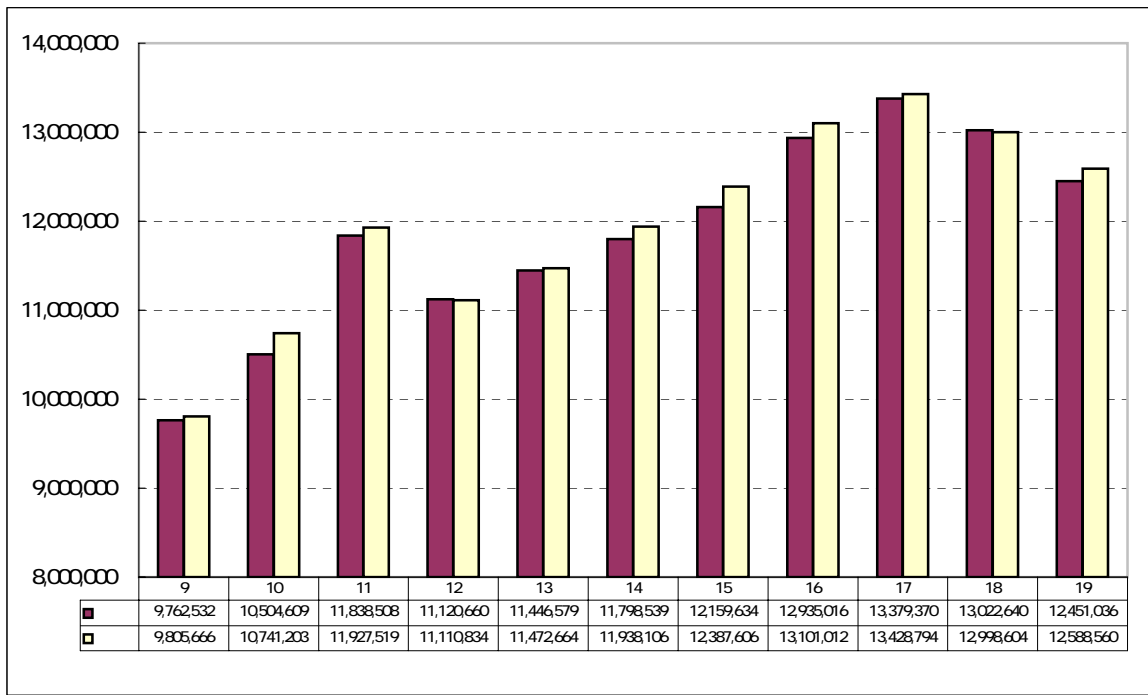




[]

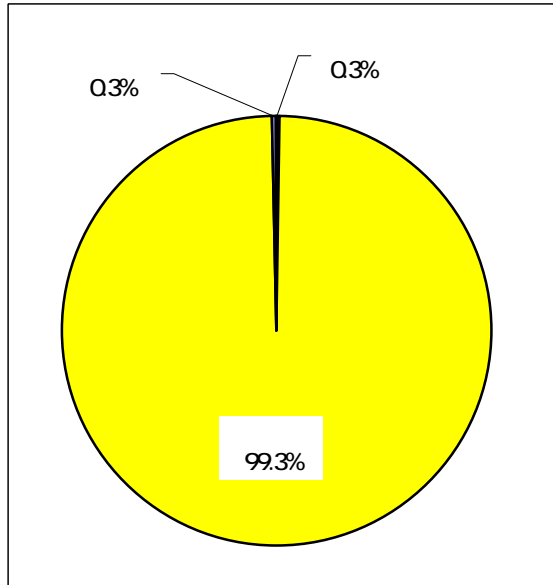
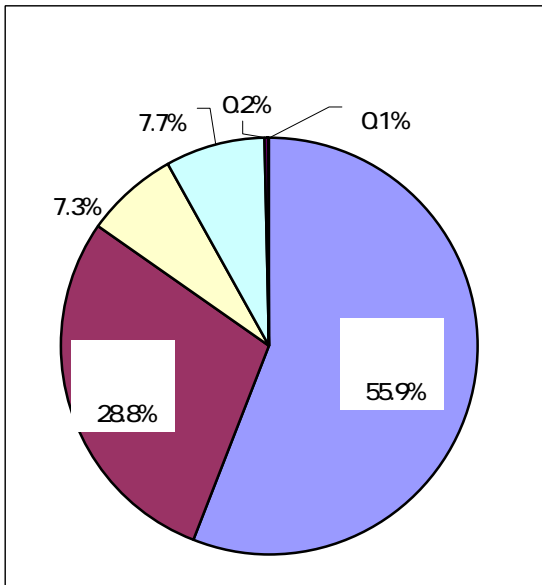
9 44 18 32 124 5,103 6 18 10 125 8,856 2 3 1 3,752 4

			- (-
9	12,451,036	12,588,560	137,524	0	137,524
8	13,022,640	12,998,604	24,036	0	24,036
	571,604	410,044	161,560	0	161,560
(%)	4.4	3.2	672.2	—	672.2



	9		8			
			B			
1	6,955,859	55.9	7,300,434	56.1	344,575	4.7
2	3,589,812	28.8	3,782,479	29.0	192,667	5.1
3	905,082	7.3	964,713	7.4	59,631	6.2
4	964,941	7.7	966,033	7.4	1,092	0.1
5	24,036	0.2	0	0.0	24,036	0.0
6	11,306	0.1	8,981	0.1	2,325	25.9
	12,451,036	100.0	13,022,640	100.0	571,604	4.4

	9		8			
			B			
1	41,336	0.3	45,193	0.3	3,857	8.5
2	12,506,017	99.3	12,863,608	99.0	357,591	2.8
3	41,207	0.3	40,379	0.3	828	—
4	0	0.0	0	0.0	0	—
5	0	0.0	49,424	0.4	49,424	100.0
	12,588,560	100.0	12,998,604	100.0	410,044	3.2



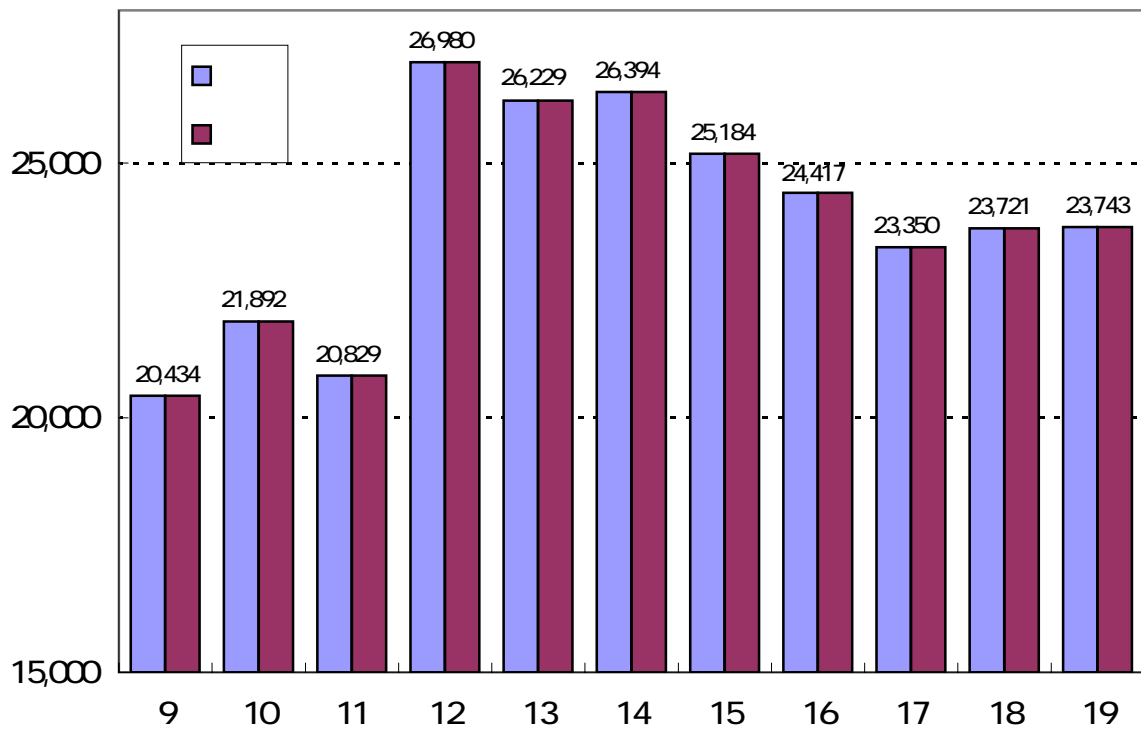
			178,626	38	185,647	41
			14,886	38	15,471	41
			12,139,179,853	30	12,520,817,291	28
			321,069,458	7.8	297,968,099	24
			12,460,249,311	28	12,818,785,390	27
			403,494	23	394,575	23
			33,101	5.2	31,463	1.8
			436,595	25	426,038	20
			225.9	6.3	212.5	1.9
			18.5	9.3	16.9	6.2
			244.4	6.5	229.5	2.2
			815,476	0.8	809,309	1.3
			21,569	120	19,260	6.7
			837,045	1.0	828,569	1.4
			30,085	5.2	31,732	0.6
			9,700	2.4	9,470	0.5
			28,540	5.1	30,088	0.7
			964,941,055	0.1	966,033,177	3.3
					/ /	

[]

2,374 3

Q10
0

			- (-
	23,743	23,743	0	0	0
	23,721	23,721	0	0	0
	22	22	0	0	0
(%)	Q1	Q1	—	—	—



1	1,129	4.8	1,220	5.1	91	7.5
2	22,615	95.2	22,501	94.9	114	0.5
	23,744	100.0	23,721	100.0	23	0.1

1	1,129	4.8	1,220	5.1	91	7.5
2	22,615	95.2	22,501	94.9	114	0.5
	23,744	100.0	23,721	100.0	23	0.1

	21,795	21,740	0.3

	304	7,158	242,229	52,321	381,424	189,027	570,451

		3		
	1	17	160	34,560

	12/27	34,560	8,640	25,920

181,961	45,490	136,471	218

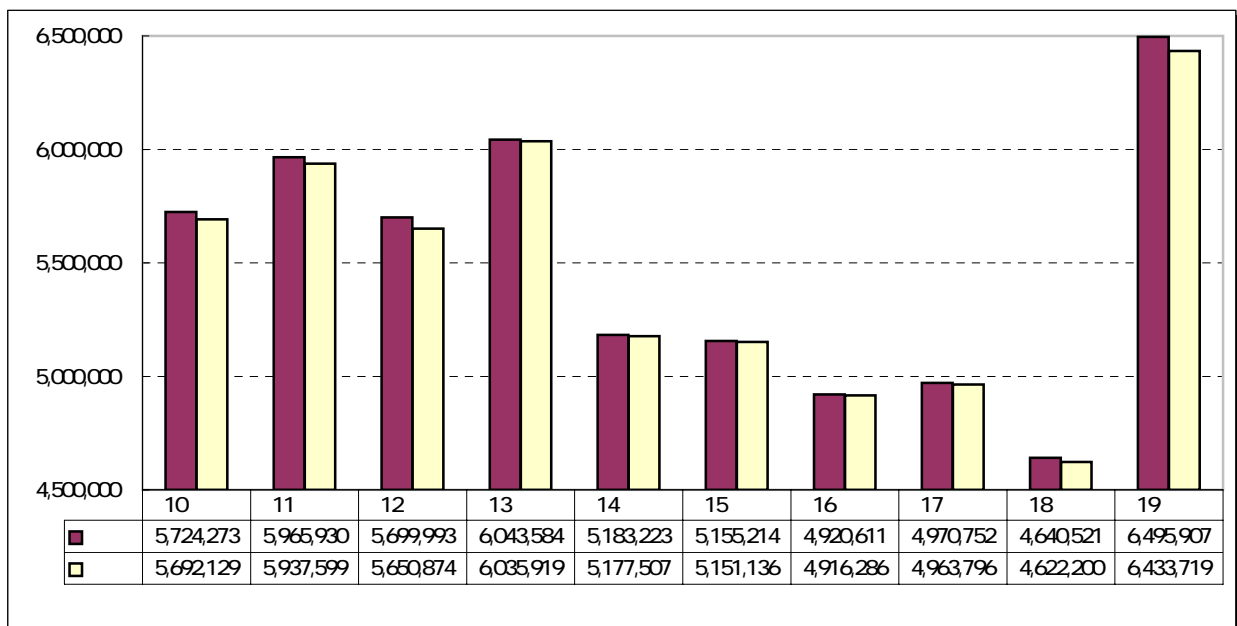
2,374 3

[]

()	97.7	97.5	0.2
	157,155	156,474	681
	2,284 ha	2,270 ha	14 ha
	830	825	05
	1,572 ha	1,561 ha	11 ha
	708	703	05
	ha	ha	

400 6,218 8 39.2 64 9,590 7 64 3,371 9 24 5

			-(-
	6,495,907	6,433,719	62,188	245	61,943
	4,640,521	4,622,200	18,321	18,321	0
	1,855,386	1,811,519	43,867	18,076	61,943
(%)	40.0	39.2	239.4	98.7	



1	9,478	01	4,949	01	4,529	91.5
2	1,770,354	27.3	1,943,454	41.9	173,100	89
	1,770,066	27.2	1,943,169	41.9	173,103	89
3	124,400	1.9	171,600	3.7	47,200	27.5
	124,400	1.9	171,600	3.7	47,200	27.5
4	5,318	01	4,200	01	1,118	26.6
5	1,214,878	18.7	1,099,647	23.7	115,231	10.5
6	18,858	0.3	40,215	0.9	21,357	5.31
7	3,334,300	51.3	1,369,500	29.5	1,964,800	14.35
	369,400	5.7	484,000	10.4	114,600	2.37
	1	10.4	716,000	15.4	40,100	5.6
	2	35.2	169,500	3.7	2,119,500	1,250.4
8	18,321	0.3	6,956	0.1	11,365	16.34
	6,495,907	100.0	4,640,521	100.0	1,855,386	40.0

1

2

2,434 1

1,546 1

1,600 9

2,533 2

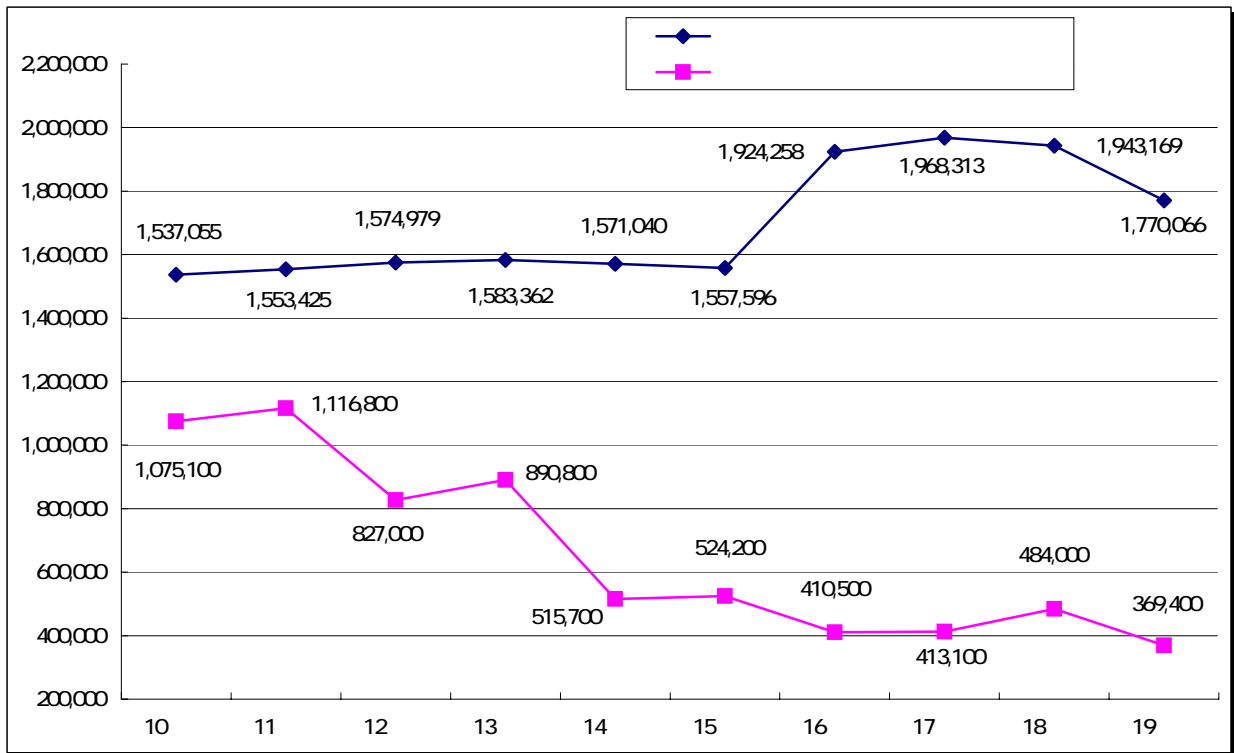
1 1,940 6

1,704 2

1,299 3

22 8,939 5

1	1,716,556	26.7	1,964,806	42.5	248,250	12.6
	598,703	9.3	698,532	15.1	99,829	14.3
	259,108	4.0	289,409	6.3	30,301	10.5
	643	0.0	732	0.0	89	1.22
	116,874	1.8	149,061	3.2	32,187	21.6
	222,078	3.5	259,330	5.6	37,252	14.4
	476,614	7.4	628,562	13.6	151,948	24.2
	50,065	0.8	45,252	1.0	4,813	10.6
	591,174	9.2	592,460	12.8	1,286	0.2
2	4,717,163	73.3	2,657,394	57.5	2,059,769	77.5
	3,842,265	59.7	1,725,533	37.3	2,116,732	122.7
	874,898	13.6	931,861	20.2	56,963	6.1
	6,433,719	100.0	4,622,200	100.0	1,811,519	39.2

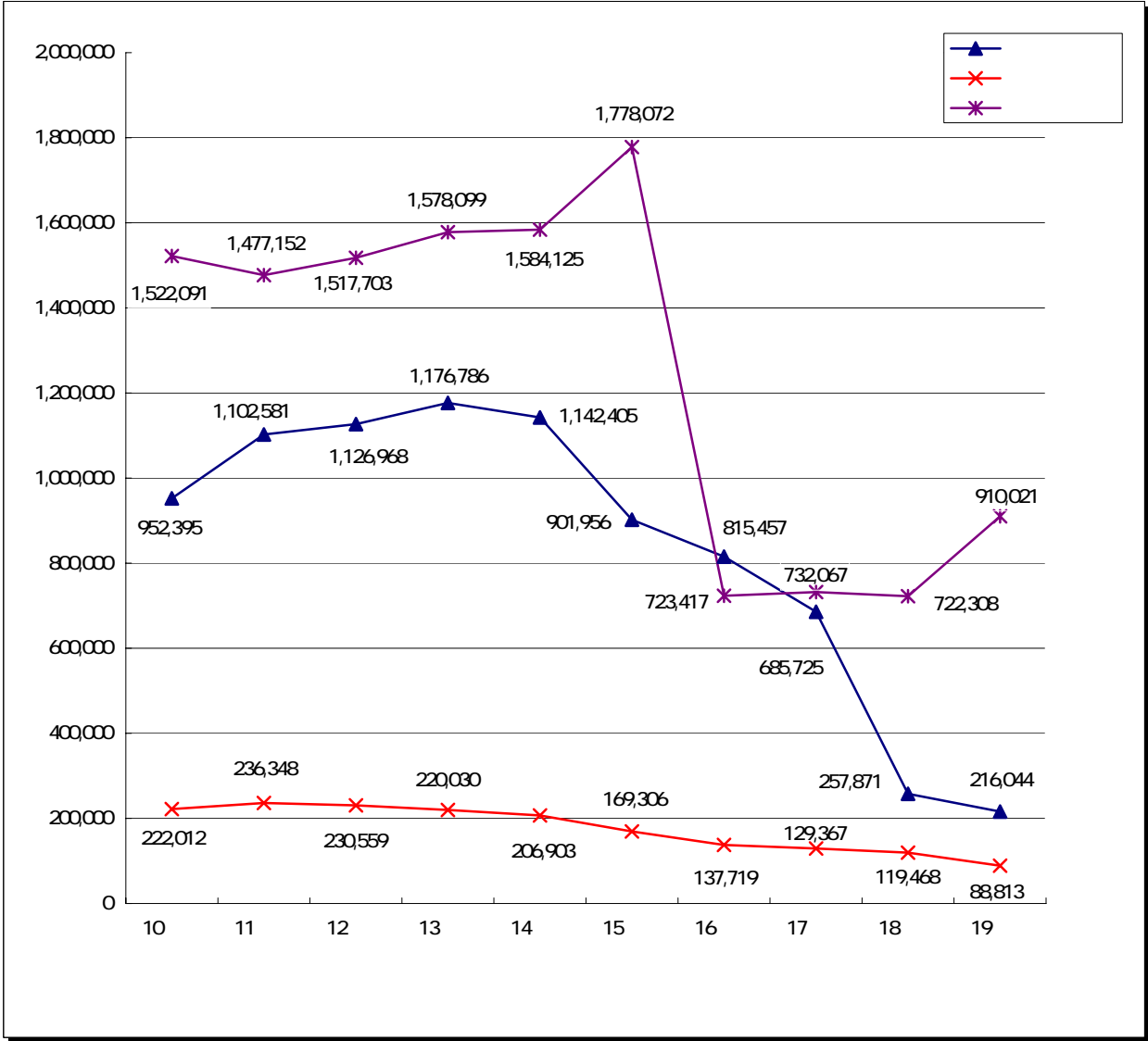


1 7,310 3

	175,284	10.2	220,033	11.3	44,749	20.3
	0	0.0	0	0.0	0	
	61,136	3.6	57,092	2.9	4,044	7.1
	171,010	10.0	181,585	9.4	10,575	5.8
	0	0.0	0	0.0	0	
	0	0.0	0	0.0	0	
	467,682	27.4	453,372	23.3	14,310	3.2
	833,011	48.8	1,031,087	53.1	198,076	19.2
	1,708,123	100.0	1,943,169	100.0	235,046	12.1

1	216,044	17.8	257,871	23.4	41,827	16.2
	53,956	4.4	50,376	4.6	3,580	7.1
	643	0.1	732	0.1	89	12.2
	56,741	4.7	79,336	7.2	22,595	28.5
	50,841	4.2	77,184	7.0	26,343	34.1
	47,054	3.9	43,464	3.9	3,590	8.3
	6,809	0.5	6,779	0.6	30	0.4
2	88,813	7.3	119,468	10.9	30,655	25.7
	87,920	7.2	117,393	10.7	29,473	25.1
	893	0.1	2,075	0.2	1,182	57.0
3	910,021	74.9	722,308	65.7	187,713	26.0
	435,577	35.9	340,370	31.0	95,207	28.0
	474,444	39.0	381,938	34.7	92,506	24.2
	1,214,878	100.0	1,099,647	100.0	115,231	10.5

1	(1,845,309)		(1,348,702)		(496,607)	
	991,144	81.6	868,350	79.0	122,794	14.1
	(1,190,710)		(641,203)		(549,507)	
	436,879	36.0	435,779	39.6	1,100	0.3
	(125,409)		(164,632)		(39,223)	
	120,091	9.9	160,432	14.6	40,341	25.1
	(23,187)		(22,780)		(407)	
	23,143	1.9	22,750	2.1	393	1.7
	(14,702)		(13,279)		(1,423)	
	14,702	1.2	13,279	1.2	1,423	10.7
	(6,272)		(4,127)		(2,145)	
	6,272	0.5	4,127	0.4	2,145	52.0
	(349,080)		(350,987)		(1,907)	
	254,108	20.9	80,289	7.3	173,819	216.5
	(135,949)		(151,694)		(15,745)	
	135,949	11.2	151,694	13.8	15,745	10.4
2	223,734	18.4	231,297	21.0	7,563	3.3
	65,244	5.4	39,597	3.6	25,647	64.8
	10,496	0.9	4,368	0.4	6,128	140.3
	30,638	2.5	34,060	3.1	3,422	10.0
	117,356	9.6	153,272	13.9	35,916	23.4
	1,214,878	100.0	1,099,647	100.0	115,231	10.5



()

5

ha

ha

ha

ha

(km)	231.4	230.6	211.0	210.3	209.6
(ha)	1,572	1,561	1,477	1,455	1,444
(km)	477.6	474.1	454.8	451.8	449.1
(ha)	2,284	2,270	2,182	2,172	2,160

()

	35	11	21	17	43

()

(/)	61,227	62,317	61,677	62,150	61,435

	22	136	900
	2	8	48
	9	9	45
	5	5	36
	1	24	84
	39	182	1,113

()

/

/

()	14,538	40,344	54,882
()	41,621	115,471	157,092
() ()	56,159	155,815	211,974
() (km)	231.4	477.6	709.0
() / () (/m)	242.7	326.2	299.0

	69	82	50	62
	99	93	91	102

(km)	46	51	38	47
(km)	43	37	46	30

(km)	04	05	08	06

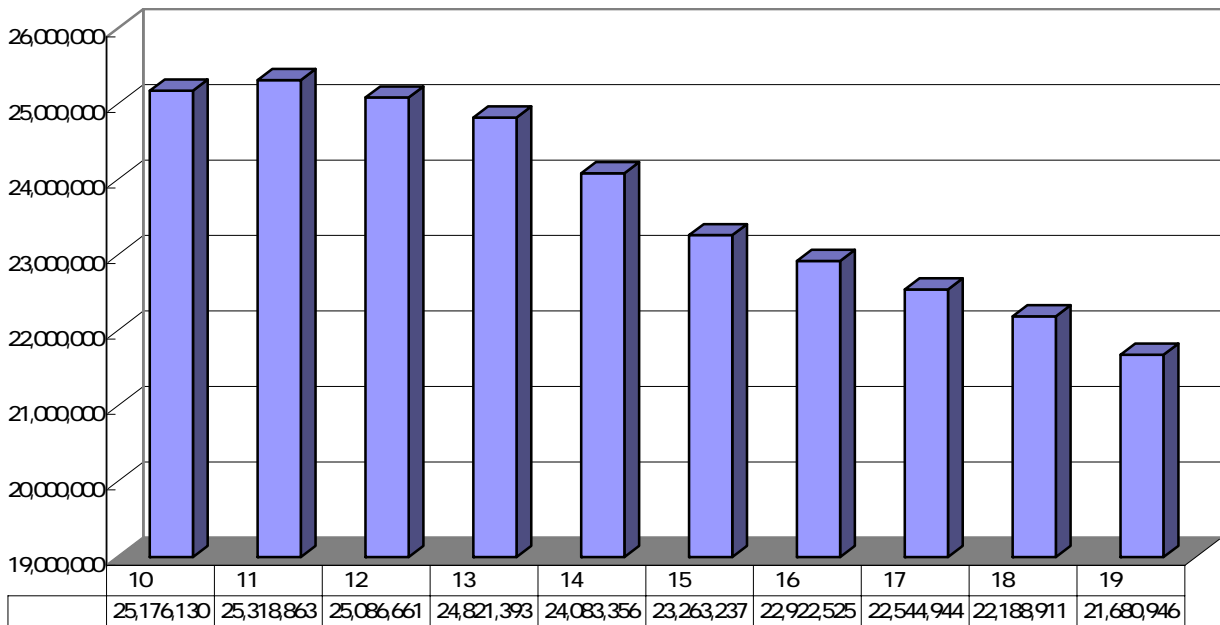
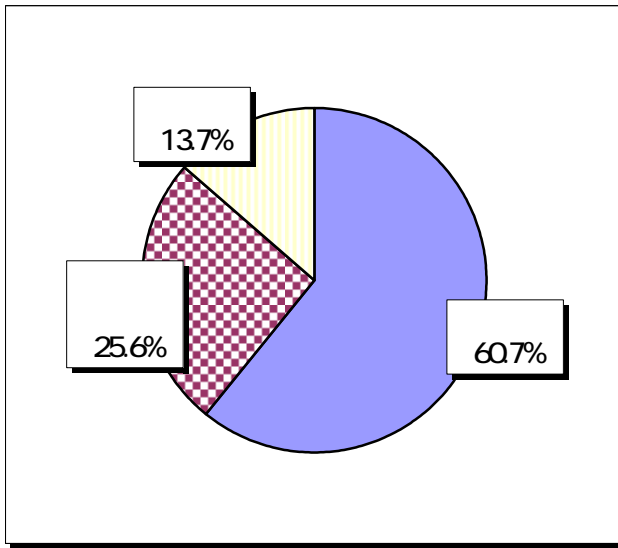
5 7% 5

607

216 8094 6
25.6

137

							() () ()
	3,270,255	24.9	2,908,485	52.3	2,152,476	72.5	8,331,216
	1,037,624	7.9	693,848	12.5	37,181	1.3	1,768,653
	3,971,475	30.2	1,958,594	35.2	778,702	26.2	6,708,771
	6,396	0.0	0	0.0	0	0.0	6,396
	4,865,910	37.0	0	0.0	0	0.0	4,865,910
	13,151,660	60.7	5,560,927	25.6	2,968,359	13.7	21,680,946



				2							
				1							
				1							
				2							
				3	183,845	183,845	0	68,200	115,400	0	245
				3							
				3							
				2							
				3							
				2							
				3							
					183,845	183,845	0	68,200	115,400	0	245

18

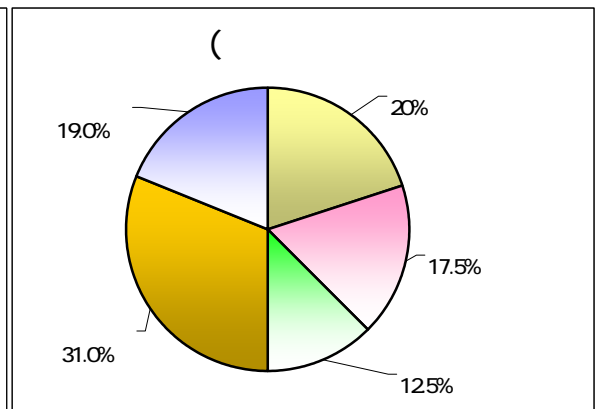
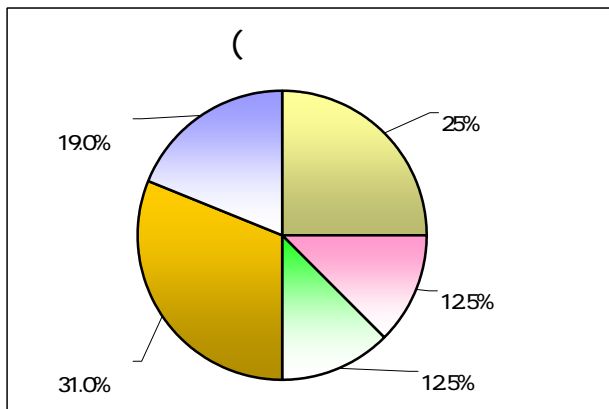
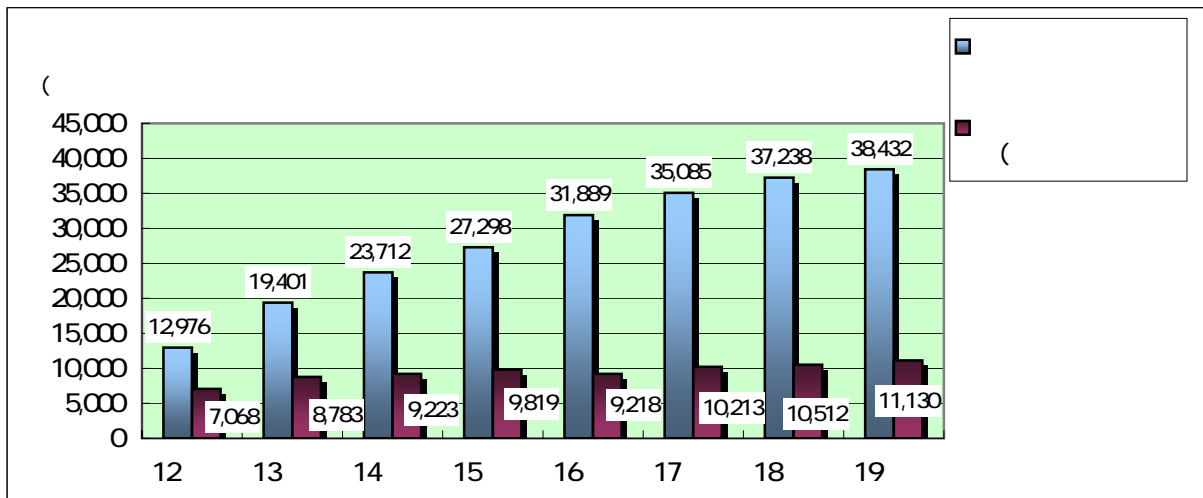
3

4.2%
(5.9%)

31%

3.2%

	9 (A)	8 ()	(A) B)	
	37,002	35,498	1,504	4.2
	5,561	5,395	166	3.1
	38,432	37,238	1,194	3.2
	11,130	10,512	618	5.9



19
8 8%

79 6

77 550 1

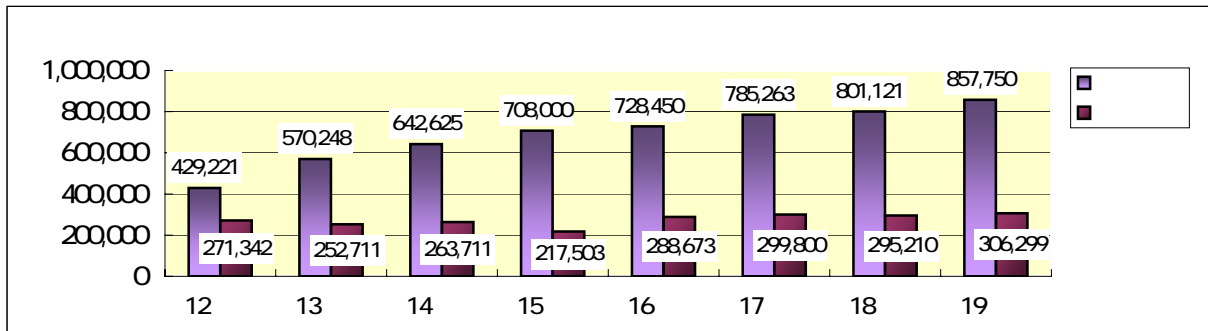
7 1%
1 9450 5

	(A)	(B)	C (A) B	(D)	(E) C - (D)
9	7,900,006	7,705,501	194,505	0	194,505
8	7,374,569	7,079,067	295,502	0	295,502
	525,437	626,434	100,997	0	100,997
(%)	7.1	8.8	34.2		34.2

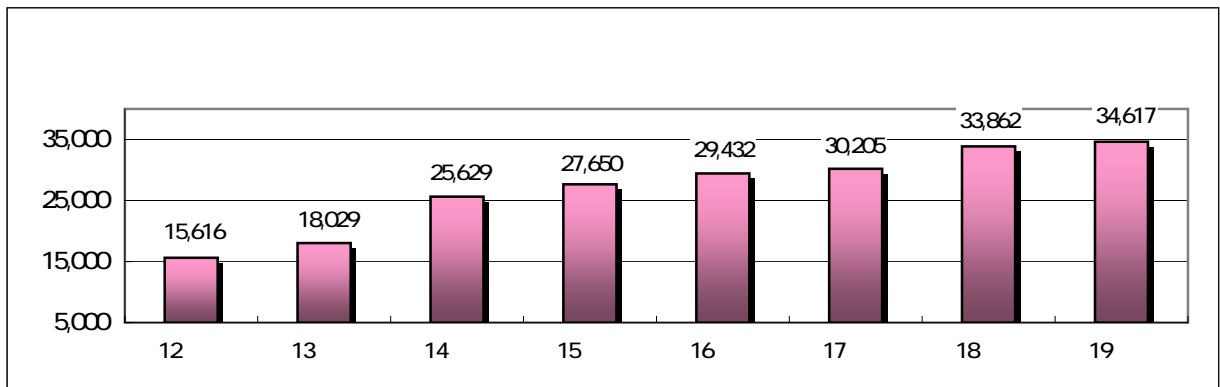
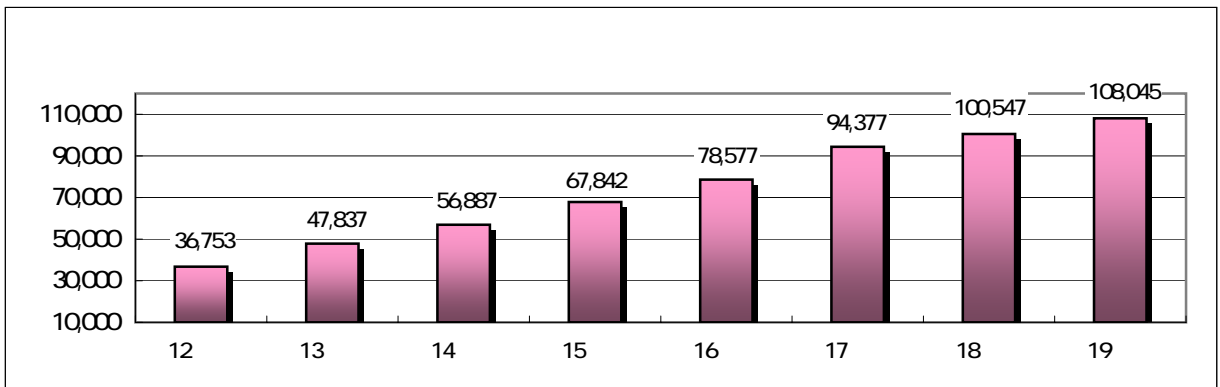
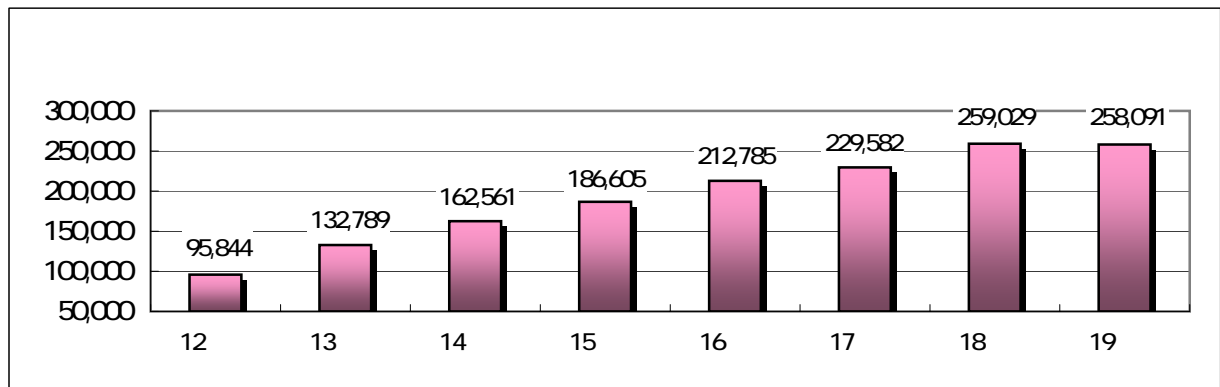
	H19 (A)		H18 ()		(A) B)	
	1,815,988	23.0	1,714,865	23.3	101,123	5.9
	174	0.0	222	0.0	48	21.6
	1,349,638	17.1	1,475,875	20.0	126,237	8.6
	2,159,592	27.3	1,975,088	26.8	184,504	9.3
	1,050,737	13.3	981,282	13.3	69,455	7.1
	1,742	0.0	424	0.0	1,318	310.8
	0	0.0	0	0.0	0	
	1,187,519	15.0	1,115,781	15.1	71,738	6.4
	39,114	0.5	31,872	0.4	7,242	22.7
10	295,502	3.7	79,160	1.1	216,342	273.3
	7,900,006	100.0	7,374,569	100.0	525,437	7.1

	H19 (A)		H18 ()		(A) B)	
	302,822	3.9	288,744	4.1	14,078	4.9
	6,862,721	89.1	6,408,967	90.5	453,754	7.1
	7,203	0.1	7,203	0.1	0	0.0
	165,214	2.1	139,399	2.0	25,815	
	127,617	1.7	202,722	2.9	75,105	37.0
	239,924	3.1	32,032	0.5	207,892	649.0
	7,705,501	100.0	7,079,067	100.0	626,434	8.8

	H19 (A)	H18 ()	(A) B)
	857,750	801,121	56,629
	306,299	295,210	11,089
	23,470	19,450	4,020
	1,187,519	1,115,781	71,738



	19	H20 3 A	19 B	A ÷ B
	258,091	21,754 /	25,258 /	86.1%
	3,300	258 /	356 /	72.5%
	19,686	1,687 /	1,877 /	89.9%
	5,563	550 /	626 /	87.9%
	108,045	9,306 /	8,650 /	107.6%
	6,766	572 /	725 /	78.9%
	21,200	1,734 /	3,102 /	55.9%
	28,626	2,339 /	2,404 /	97.3%
	5,991	357 /	1,192 /	29.9%
	8,947	796 /	223 /	357.0%
	937	81 /	82 /	98.8%
	1,357	117 /	62 /	188.7%
	14,424	1,215 /	1,719 /	70.7%
	606	51 /	62 /	82.3%
	549	40 /	71 /	56.3%
	35,009	2,874 /	3,525 /	81.5%



88.6%

H18 H19

H18 84.3%

H19

Q2

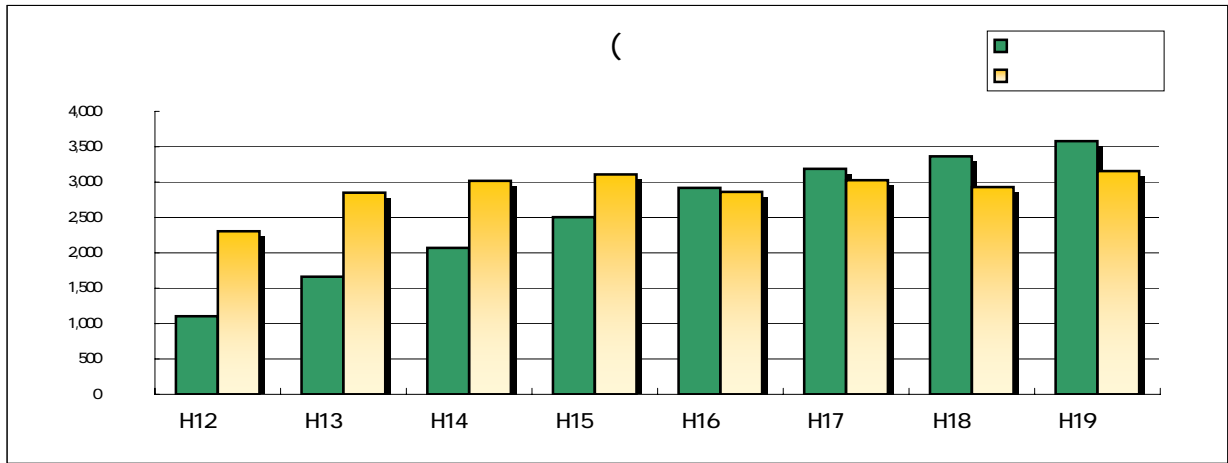
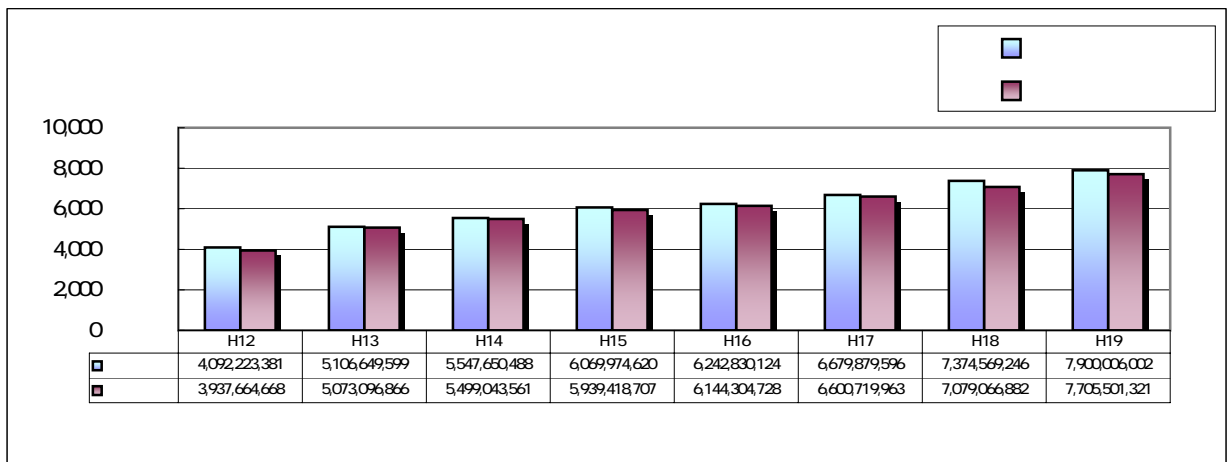
18
16

19

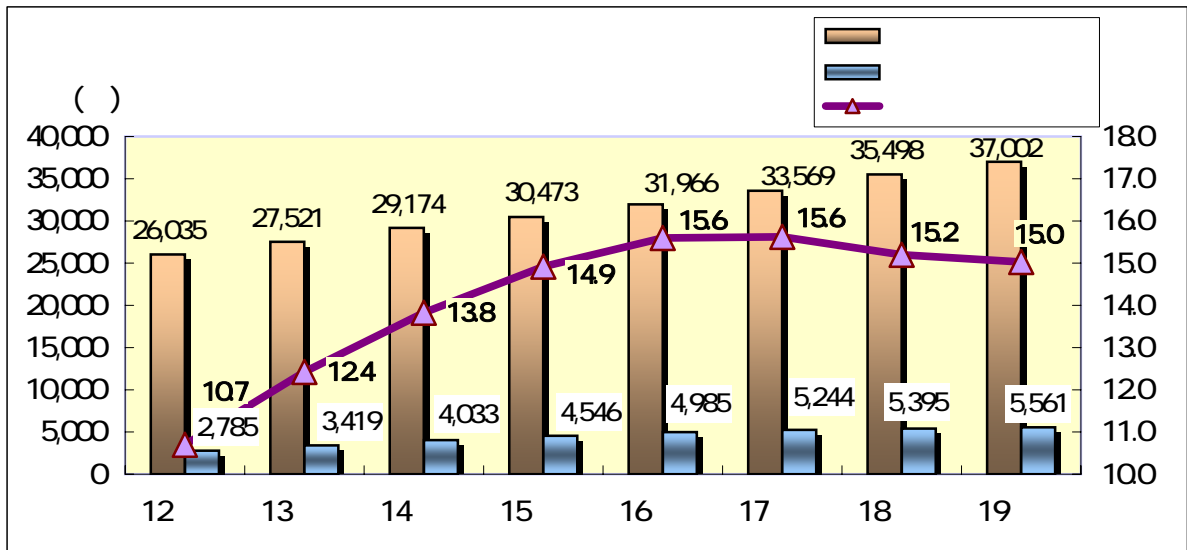
150

18

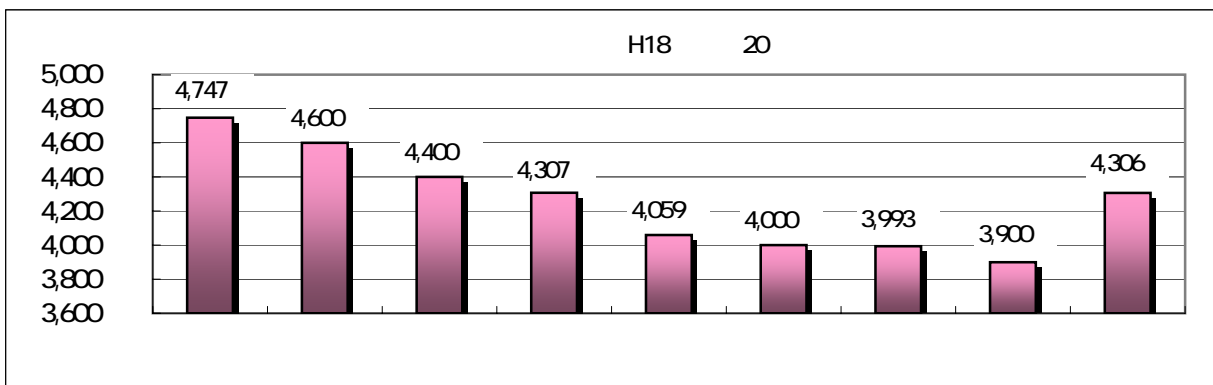
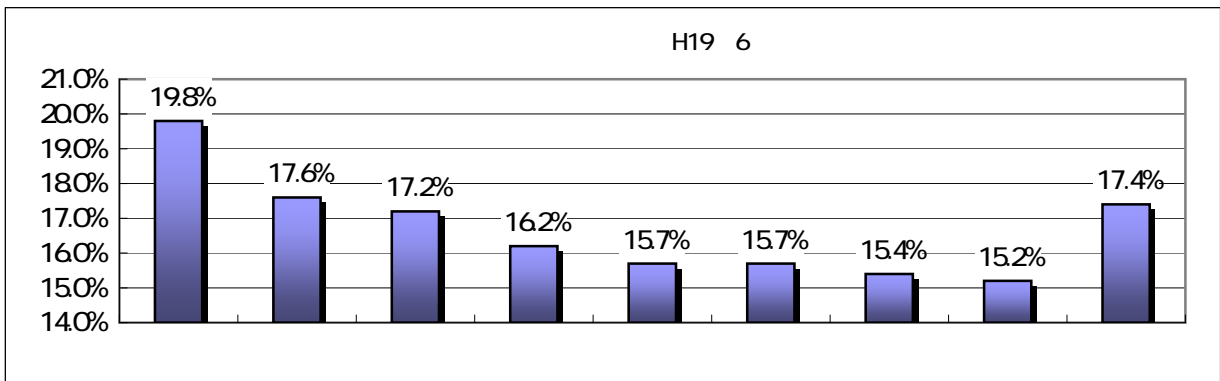
	H19 (A)	H19 ()		H18 (A)	H18 ()	
	3,579,604	4,372,136	81.9	3,363,673	4,137,516	81.3
	2,894,571	3,014,537	96.0	2,708,767	3,110,495	87.1
	116,243	99,982	116.3	105,399	98,105	107.4
	9,829	12,314	79.8	10,025	12,063	83.1
	262,474	250,512	104.8	221,103	246,012	89.9
	6,862,721	7,749,481	88.6	6,408,967	7,604,191	84.3



	(A)	()
	37,002	35,498
	5,561	5,395
	150	152



(H20 2 23.2% H19 6



1

	(A)	(B)	C	(A) (B)	(D)	(E)	C - (D)
	1,901,228	1,901,228		0		0	0
	1,371,325	1,371,325		0		0	0
	529,903	529,903		0		0	0
(%)	138.64%	138.64%					

	H19 (A)		H18 ()		(A)	(B)
	328,240	22.4	308,311	0.1		19,929
	1,449,500	47.7	654,300	98.4		795,200
	123,488	6.5	408,665	1.5		285,177
	0	0.1	49	0.0		49
	1,901,228	100.0	1,371,325	100.0		529,903

	H19 (A)		H18 ()		(A)	(B)
	1,450,387	49.3%	676,794	100.0		773,593
	0	0.0%	338,374	0.0		338,374
	158,584	8.3%	79,292	0.0		79,292
	292,257	15.4%	276,865	0.0		15,392
	1,901,228	100.0	1,371,325	100.0		529,903

	H19 (A)	(B)	H18 (C)	(D)	(A) (C)	(B) (D)
	8,980.04	24	3,293.62	17	5,686.42	7

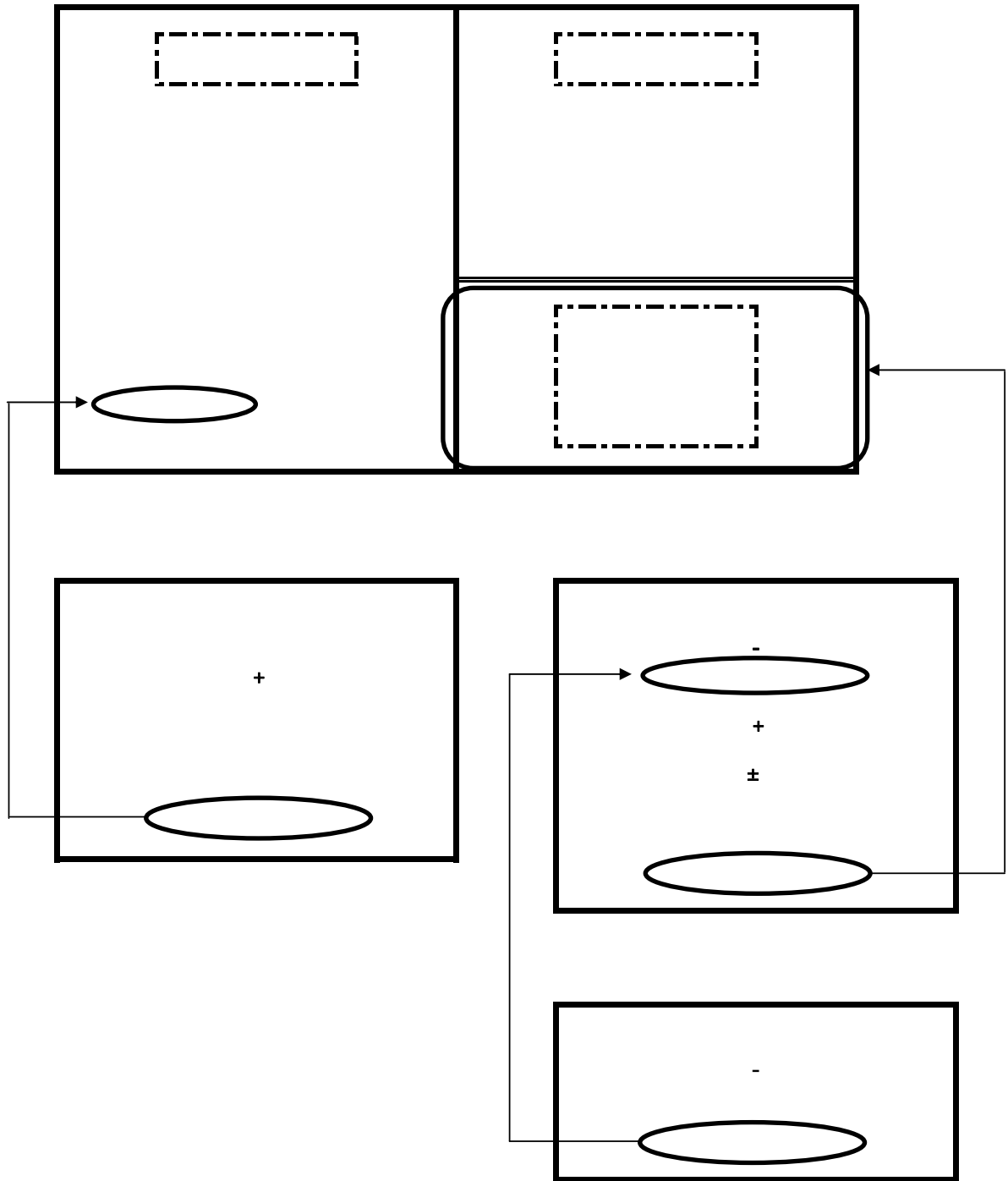
178	443 2 2	55.08	19,663	
4	6 2	42.41	11,576	
55	21 1	90.34	10,808	
	70 1	1,076.28	74,375	
		1,264.11	116,422	

202 2		89.62	216	
202 2		177.48	428	
22 8 2		1,125.00	2,633	
108 1		375.09	1,489	
364 1 1		271.98	636	
49 1		5	18	
55		630.41	1,263	
444 1		49.00	65	
300		619.28	318	
		3,332.86	7,066	

10	4 2 1	256.49	56,428	
	364 3	18.44	535	
	101	19.42	786	
	124 19	8,685.69	1,392,638	
		8,980.04	1,450,387	

288 21.3 26.3





19

	200,562		61,498
	85,035		49,554
	86,495		11,487
	25,419		458
	3,613		
	6,779		4,358
	1,479		4,332
	711		26
	2,891		
	1,698		65,856
	2,720		
	2,411		144,204
	309		
	210,060		210,060

7,023

14,314

)

18

	200,604		62,426
	86,299		50,368
	85,980		11,574
	24,798		484
	3,527		
	7,815		5,979
	1,456		5,141
	996		837
	3,623		
	1,741		68,404
	3,500		
	3,270		143,514
	229		
	211,919		211,919

	H

19

[]

	37,040
	11,065
	10,715
	351
	9,997
	6,224
	3,201
	572
	14,468
	5,720
	5,963
	2,575
	210
	1,510
	1,383
	127
	1,779
	1,779
	35,261

)

18

[]

	36,989
	11,597
	10,653
	944
	9,818
	6,011
	3,211
	595
	13,883
	5,524
	5,483
	2,586
	290
	1,690
	1,467
	223
	1,259
	1,259
	35,730

	1	
	2	
	3	
	4	

19

[]

	143,514
	35,261
	35,354
	22,125
	3,847
	5,099
	268
	4,016
	707
	110
	144,204

)

18

[]

	144,768
	35,730
	35,289
	20,433
	4,213
	4,692
	427
	5,524
	29
	842
	143,514

19

[]

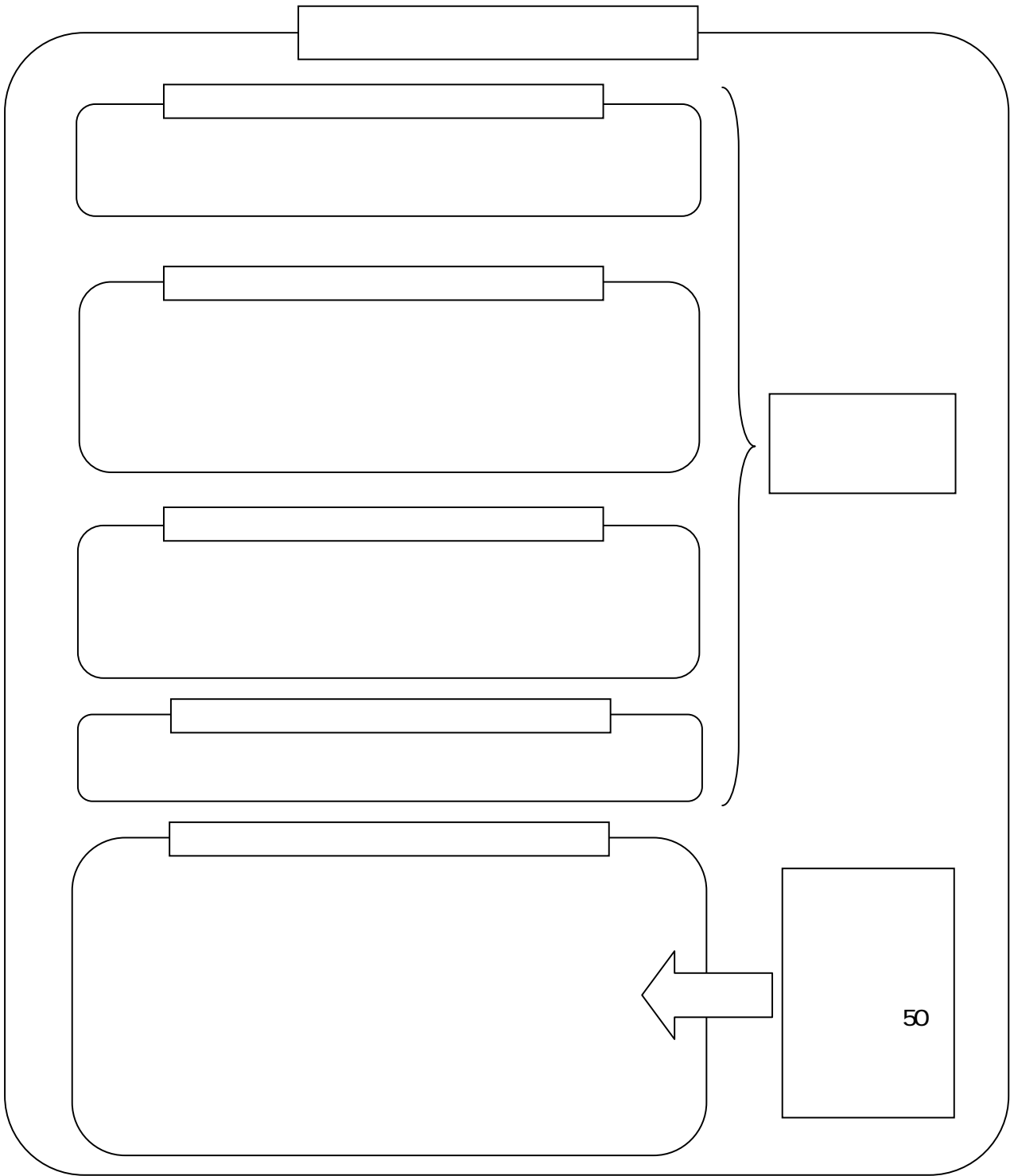
	5,179
	763
	4,976
	560
	845
	286
	42,239
	42,798
	3,159
	5,567
	360
	1,489

)

18

[]

	6,175
	860
	4,857
	458
	387
	845
	42,773
	42,314
	3,158
	5,519
	682
	3,502



	300,948		99,606
	129,872		55,898
	142,044		30,429
	25,419		11,845
	3,613		1,434
	14,296		5,638
	1,157		4,429
	856		1,209
	3,399		
	8,884		105,245
	8,312		
	5,902		
	2,410		218,313
	323,557		323,557

)

[]

	84,221
	15,936
	15,582
	354
	16,643
	10,523
	5,017
	1,102
	44,703
	1,075
	35,494
	7,924
	210
	6,939
	3,060
	3,878
	38,054
	38,054
	46,167

)

19

[]

	217,378
	46,167
	46,505
	22,125
	3,847
	15,916
	2,240
	2,377
	707
	111
	218,313

)

19

[]

	8,198
	1,373
	7,567
	742
	2,668
	1,926
	102,238
	105,648
	7,058
	9,566
	634
	1,536

)
